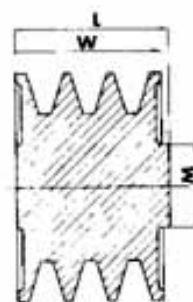


**"PT" SPZ-Z-3V**

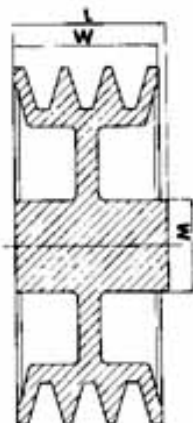
Diametro primitivo pitch diameter dw [mm]	gole grooves N°	forma size fig.	M [mm]	L [mm]
50	1	P	32*	28
	2	P	35*	35
	3	P	35*	44
	4	P	35*	56
56	1	P	32**	28
	2	P	40**	35
	3	P	42**	44
	4	P	42**	56
63	1	P	40	28
	2	P	40	35
	3	P	42	44
	4	P	42	56
71	1	P	40	28
	2	P	48	35
	3	P	50	44
	4	P	50	56
75	1	P	40	28
	2	P	50	35
	3	P	50	44
	4	P	50	56
80	1	D	40	28
	2	P	50	35
	3	P	50	44
	4	P	65	56
	5	P	65	68
85	1	D	40	28
	2	D	50	35
	3	P	50	44
	4	P	65	56
	5	P	68	68
90	1	D	40	28
	2	D	50	35
	3	D	50	44
	4	P	65	56
	5	P	68	68
95	1	D	45	28
	2	D	50	35
	3	D	50	40
	4	P	65	56
	5	P	68	68
100	1	D	45	28
	2	D	50	35
	3	D	60	40
	4	P	65	56
	5	P	68	68
106	1	D	45	28
	2	D	50	35
	3	D	60	40
	4	D	65	56
	5	D	68	68
112	1	D	45	28
	2	D	50	35
	3	D	60	40
	4	D	68	52
	5	D	68	60
118	1	D	45	28
	2	D	50	35
	3	D	60	40
	4	D	68	52
	5	D	75	60

**"PT" SPZ-Z-3V**

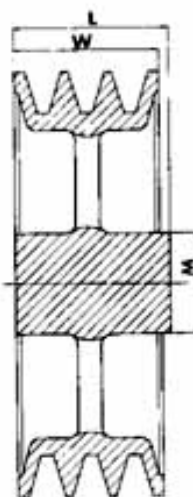
Diametro primitivo pitch diameter dw [mm]	gole grooves N°	forma size fig.	M [mm]	L [mm]
125	1	D	45	28
	2	D	50	35
	3	D	60	40
	4	D	68	52
	5	D	75	60
132	1	D	45	28
	2	D	50	40
	3	D	60	40
	4	D	68	52
	5	D	75	60
140	1	D	45	28
	2	D	60	40
	3	D	60	40
	4	D	68	52
	5	D	75	60
150	1	D	55	32
	2	D	60	40
	3	D	68	45
	4	D	68	52
	5	D	80	60
160	1	D	55	32
	2	D	60	40
	3	D	68	45
	4	D	68	52
	5	D	80	60
180	1	D	55	32
	2	D	60	40
	3	D	68	45
	4	D	80	52
	5	D	80	60
200	1	D-6F	55	32
	2	D-6F	65	40
	3	D-6F	68	45
	4	D-6F	80	52
	5	D-6F	80	60
224	1	3R	55	32
	2	3R	65	40
	3	3R	68	45
	4	3R	80	52
	5	3R	80	60
250	1	3R	55	32
	2	3R	62	40
	3	3R	68	45
	4	3R	80	52
	5	3R	80	60
280	1	3R	68	45
	2	3R	68	45
	3	3R	80	50
	4	3R	80	52
	5	3R	96	60
315	1	3R	68	45
	2	3R	68	45
	3	3R	80	50
	4	3R	96	55
	5	3R	96	60
355	1	3R	68	45
	2	3R	68	45
	3	3R	80	50
	4	3R	96	55
	5	3R	96	60



P



D



R

\* Attenzione: il diametro fondo gola è di 32 mm  
Caution: diameter of bottom groove is 32 mm.

\*\* Attenzione: il diametro fondo gola è di 38 mm  
Caution: diameter of bottom groove is 38 mm.

**"PT" SPA-A**

Diametro primitivo pitch diameter dw (mm)	gole grooves N°	forma size fig.	M (mm)	L (mm)
<b>50</b>	1	P	32*	35
	2	P	40*	45
	3	P	40*	54
<b>56</b>	1	P	35**	35
	2	P	40**	45
	3	P	40**	54
<b>63</b>	1	P	40	35
	2	P	40	45
	3	P	40	54
	4	P	40	68
	5	P	40	84
<b>71</b>	1	P	40	35
	2	P	50	45
	3	P	52	54
	4	P	52	68
	5	P	52	84
<b>75</b>	1	P	40	35
	2	P	50	45
	3	P	52	54
	4	P	52	68
	5	P	52	84
<b>80</b>	1	P	45	35
	2	P	50	45
	3	P	62	54
	4	P	62	68
	5	P	62	84
<b>85</b>	1	D	45	35
	2	P	50	45
	3	P	62	54
	4	P	62	68
	5	P	62	84
<b>90</b>	1	D	45	35
	2	P	60	45
	3	P	62	54
	4	P	68	68
	5	P	68	84
<b>95</b>	1	D	45	35
	2	P	60	45
	3	P	62	54
	4	P	68	68
	5	P	68	84
<b>100</b>	1	D	45	35
	2	P	60	45
	3	P	62	54
	4	P	70	50
	5	P	70	50
<b>106</b>	1	D	45	35
	2	D	60	45
	3	D	60	50
	4	P	68	50
	5	P	68	50
<b>112</b>	1	D	45	35
	2	D	60	45
	3	D	60	50
	4	P	68	50
	5	P	68	50
<b>118</b>	1	D	60	35
	2	D	60	45
	3	D	70	50
	4	P	70	50
	5	P	80	50
<b>125</b>	1	D	55	35
	2	D	60	45
	3	D	68	50
	4	D	68	50
	5	D	80	50

**"PT" SPA-A**

Diametro primitivo pitch diameter dw (mm)	gole grooves N°	forma size fig.	M (mm)	L (mm)
<b>132</b>	1	D	55	35
	2	D	60	45
	3	D	68	50
	4	D	68	50
	5	D	80	50
<b>140</b>	1	D	60	35
	2	D	60	45
	3	D	68	50
	4	D	68	50
	5	D	80	50
<b>150</b>	1	D	60	40
	2	D	60	45
	3	D	68	50
	4	D	68	50
	5	D	80	50
<b>160</b>	1	D	60	40
	2	D	60	45
	3	D	68	50
	4	D	80	50
	5	D	80	50
<b>170</b>	1	D	60	40
	2	D	60	45
	3	D	68	50
	4	D	80	50
	5	D	80	50
<b>180</b>	1	D	65	40
	2	D	68	50
	3	D	68	50
	4	D	80	60
	5	D	80	65
<b>190</b>	1	D	65	40
	2	D	68	50
	3	D	68	50
	4	D	80	60
	5	D	80	65
<b>200</b>	1	D-6F	65	40
	2	D-6F	68	50
	3	D-8F	75	50
	4	D	88	60
	5	D	88	65
<b>224</b>	1	D-6F	65	40
	2	D-6F	68	50
	3	D-6F	75	50
	4	D-6F	88	60
	5	D-6F	88	65
<b>236</b>	1	D-6F	68	40
	2	D-6F	68	50
	3	D-6F	75	50
	4	D-8F	88	60
	5	D-8F	88	65
<b>250</b>	1	3R	75	50
	2	3R	75	50
	3	3R	75	50
	4	3R	88	60
	5	3R	96	65
<b>280</b>	1	3R	68	50
	2	3R	75	50
	3	3R	75	50
	4	3R	88	60
	5	3R	96	65
<b>300</b>	1	3R	75	50
	2	3R	75	50
	3	3R	88	60
	4	3R	88	60
	5	3R	96	70

**"PT" SPA-A**

Diametro primitivo pitch diameter dw (mm)	gole grooves N°	forma size fig.	M (mm)	L (mm)	
<b>315</b>	2	3R	75	50	
	3	3R	88	60	
	4	3R	88	60	
	5	3R	96	70	
<b>355</b>	2	3R	88	60	
	3	3R	88	60	
	4	3R	88	60	
	5	3R	96	70	
<b>400</b>	2	6R	88	60	
	3	6R	96	65	
	4	6R	96	65	
	5	6R	96	70	
<b>450</b>	2	6R	88	60	
	3	6R	96	65	
	4	6R	104	70	
	5	6R	104	70	
<b>500</b>	2	6R	88	60	
	3	6R	96	65	
	4	6R	104	70	
	5	6R	104	70	
<b>560</b>	2	6R	88	60	
	3	6R	96	65	
	4	6R	104	70	
	5	6R	104	70	
<b>630</b>	3	6R	104	65	
	4	6R	112	70	
	5	6R	120	75	
<b>800</b>	3	6R	128	100	
	4	6R	128	100	
	5	6R	145	110	

\* Attenzione: il diametro fondo gola è di 32 mm  
Caution: diameter of bottom groove is 32 mm.

\*\* Attenzione: il diametro fondo gola è di 38 mm  
Caution: diameter of bottom groove is 38 mm.

**"PT" SPB-B-5V**

Diametro primitivo pitch diameter dw [mm]	gole grooves N°	forma size fig.	M [mm]	L [mm]
60	1	P	40*	35
	2	P	40*	48
71	1	P	45**	35
	2	P	45**	48
	3	P	45**	67
75	1	P	45	35
	2	P	45	48
	3	P	45	67
80	1	P	50	35
	2	P	50	48
	3	P	50	67
	4	P	52	86
	5	P	58	105
85	1	P	50	35
	2	P	50	48
	3	P	52	67
	4	P	58	86
	5	P	58	105
90	1	P	50	35
	2	P	50	48
	3	P	58	67
	4	P	65	50
	5	P	65	50
95	1	P	52	35
	2	P	55	48
	3	P	58	67
	4	P	65	50
	5	P	65	50
100	1	P	52	35
	2	P	55	48
	3	P	58	67
	4	P	65	50
	5	P	65	50
106	1	P	50	35
	2	P	55	48
	3	P	65	50
	4	P	65	50
	5	P	67	50
112	1	D	55	35
	2	D	60	48
	3	P	65	50
	4	P	75	50
	5	P	75	50
118	1	D	55	35
	2	D	60	48
	3	P	75	50
	4	P	75	50
	5	P	75	50
125	1	D	55	35
	2	D	60	48
	3	D	75	50
	4	D	75	50
	5	D	75	50
	6	P	80	60
132	1	D	60	35
	2	D	60	50
	3	D	75	50
	4	D	80	50
	5	D	80	60
	6	D	80	60
140	1	D	60	35
	2	D	65	50
	3	D	75	50
	4	D	80	50
	5	D	80	60
	6	D	80	60

**"PT" SPB-B-5V**

Diametro primitivo pitch diameter dw [mm]	gole grooves N°	forma size fig.	M [mm]	L [mm]
150	1	D	60	40
	2	D	65	50
	3	D	75	50
	4	D	80	50
	5	D	80	60
	6	D	88	60
160	1	D	65	40
	2	D	68	50
	3	D	80	50
	4	D	88	60
	5	D	88	60
	6	D	88	65
170	1	D	65	40
	2	D	68	50
	3	D	80	50
	4	D	88	60
	5	D	88	60
	6	D	104	65
180	1	D	65	40
	2	D	68	50
	3	D	80	50
	4	D	88	60
	5	D	88	70
	6	D	104	70
190	1	D	65	40
	2	D	68	50
	3	D	80	50
	4	D	88	60
	5	D	88	70
	6	D	104	70
200	1	D	68	40
	2	D	68	50
	3	D	80	50
	4	D	88	60
	5	D	88	70
	6	D	104	80
212	1	D-6F	68	45
	2	D-6F	68	50
	3	D	80	50
	4	D	88	60
	5	D	88	70
	6	D	104	80
224	1	D-6F	68	45
	2	D-6F	75	50
	3	D-6F	80	50
	4	D	88	60
	5	D	96	70
	6	D	104	80
236	1	D-6F	68	45
	2	D-6F	75	50
	3	D-6F	80	60
	4	D-6F	88	65
	5	D-6F	96	75
	6	D	104	80
250	1	3R	70	45
	2	3R	75	50
	3	3R	88	60
	4	3R	96	65
	5	D-6F	104	75
	6	D-6F	104	80
280	1	3R	75	45
	2	3R	75	50
	3	3R	88	60
	4	3R	96	65
	5	3R	104	75
	6	3R	104	80

**"PT" SPB-B-5V**

Diametro primitivo pitch diameter dw [mm]	gole grooves N°	forma size fig.	M [mm]	L [mm]
300	1	3R	75	50
	2	3R	80	50
	3	3R	88	60
	4	3R	96	65
	5	3R	104	75
	6	3R	104	80
315	2	3R	88	60
	3	3R	88	60
	4	3R	96	65
	5	3R	104	75
	6	3R	120	90
	355	2	3R	88
3		3R	96	60
4		3R	96	65
5		3R	104	75
6		3R	120	90
400		2	6R	88
	3	6R	96	65
	4	6R	104	75
	5	6R	112	85
	6	6R	120	100
	450	2	6R	88
3		6R	96	65
4		6R	104	75
5		6R	112	85
6		6R	120	100
500		2	6R	96
	3	6R	104	75
	4	6R	112	85
	5	6R	120	90
	6	6R	128	105
	560	2	6R	96
3		6R	104	75
4		6R	112	85
5		6R	120	90
6		6R	128	105
630		2	6R	104
	3	6R	120	90
	4	6R	128	105
	5	6R	145	115
	6	6R	145	115
	710	2	6R	96
3		6R	112	75
4		6R	120	90
5		6R	128	105
6		6R	145	115
800		2	6R	104
	3	6R	120	90
	4	6R	128	105
	5	6R	145	115
	6	6R	145	115

\* Attenzione: il diametro fondo gola è di 32 mm  
Caution: diameter of bottom groove is 32 mm.

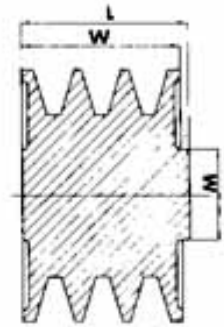
\*\* Attenzione: il diametro fondo gola è di 38 mm  
Caution: diameter of bottom groove is 38 mm.

**“PT” C**

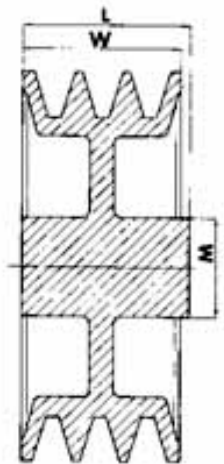
Diametro primitivo pitch diameter dw [mm]	gole grooves N°	forma size fig.	M [mm]	L [mm]
<b>140</b>	1	D	62	58
	2	D	70	58
	3	D	74	70
	4	D	74	74
	5	D	74	78
	6	D	75	78
<b>150</b>	1	D	62	59
	2	D	70	61
	3	D	70	70
	4	D	74	74
	5	D	75	78
	6	D	78	78
<b>160</b>	1	D	62	59
	2	D	70	61
	3	D	76	70
	4	D	78	74
	5	D	78	78
	6	D	82	78
<b>170</b>	1	D	70	60
	2	D	70	62
	3	D	76	74
	4	D	82	76
	5	D	82	78
	6	D	87	80
<b>180</b>	1	D	70	60
	2	D	70	60
	3	D	78	72
	4	D	82	74
	5	D	82	80
	6	D	87	72
<b>190</b>	1	D	70	60
	2	D	74	60
	3	D	78	72
	4	D	82	74
	5	D	84	80
	6	D	88	85
<b>200</b>	1	D	71	60
	2	D	73	72
	3	D	83	76
	4	D	90	88
	5	D	92	92
	6	D	96	98
<b>224</b>	1	D	71	63
	2	D	76	68
	3	D	83	76
	4	D	93	90
	5	D	93	92
	6	D	98	98
<b>250</b>	1	D	82	63
	2	D	82	71
	3	D	90	80
	4	D	95	90
	5	D	100	96
	6	D	102	102

**“PT” C**

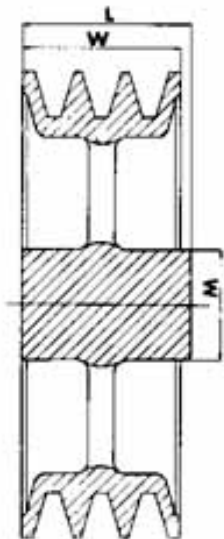
Diametro primitivo pitch diameter dw [mm]	gole grooves N°	forma size fig.	M [mm]	L [mm]
<b>280</b>	1	D	82	64
	2	D	82	74
	3	D	90	80
	4	D	95	90
	5	D	100	96
	6	R	102	102
<b>300</b>	1	R	85	65
	2	R	90	75
	3	R	90	80
	4	R	105	90
	5	R	105	95
	6	R	105	107
<b>315</b>	1	R	85	65
	2	R	90	75
	3	R	90	80
	4	R	105	90
	5	R	105	95
	6	R	105	107
<b>355</b>	1	R	100	70
	2	R	105	75
	3	R	105	80
	4	R	115	90
	5	R	115	95
	6	R	115	110
<b>400</b>	1	R	100	70
	2	R	105	75
	3	R	105	80
	4	R	120	90
	5	R	120	95
	6	R	120	110
<b>450</b>	1	R	105	70
	2	R	110	75
	3	R	110	80
	4	R	120	95
	5	R	120	100
	6	R	120	110
<b>500</b>	1	R	110	75
	2	R	115	80
	3	R	115	85
	4	R	120	100
	5	R	125	110
	6	R	125	115
<b>560</b>	1	R	110	75
	2	R	115	80
	3	R	115	85
	4	R	125	100
	5	R	125	110
	6	R	125	115
<b>630</b>	1	R	115	75
	2	R	120	80
	3	R	120	95
	4	R	130	100
	5	R	130	110
	6	R	130	115



P

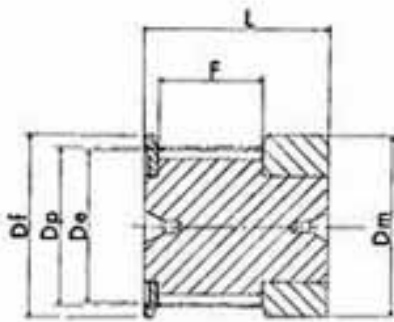


D

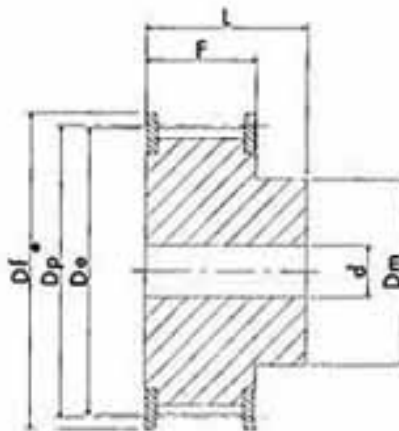


R

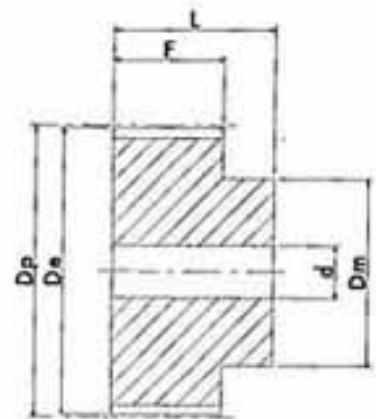
# PULEGGE DENTATE PER CINGHIE POSITIVE TIMING BELT PULLEYS



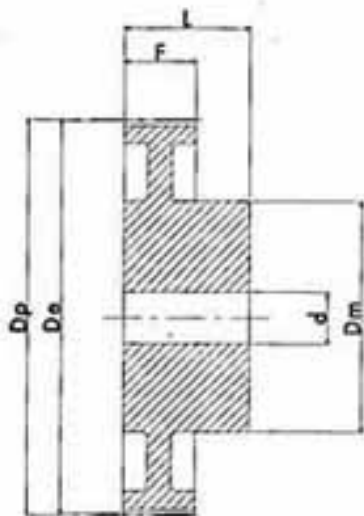
esecuzione 0F



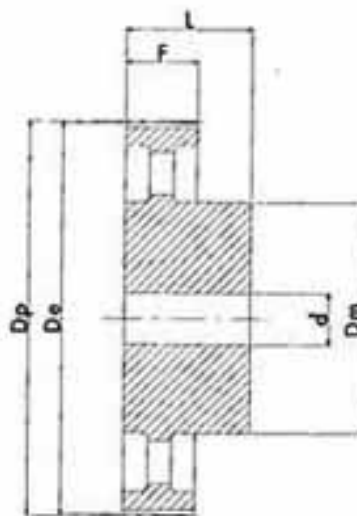
esecuzione 1F



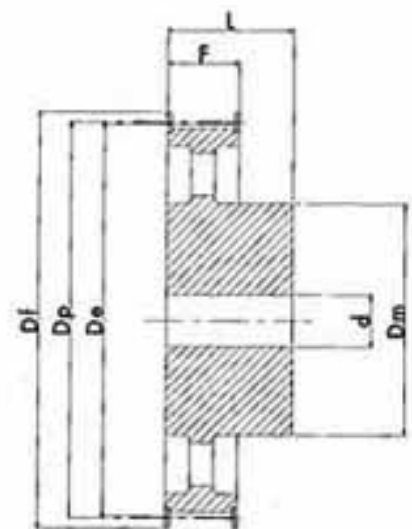
esecuzione 2



esecuzione 3



esecuzione 4



esecuzione 5F

TIPO: **MXL 025** PASSO 0,080" (mm 2,032)

CARATTERISTICHE		TIPO	ESEC.	N. DENTI	Dp PRIMITIVO	De ESTERNO	Df FLANGIA	Dm MOZZO	F	L	d	N° FLANGIA	
ALLUMINIO	CON FLANGIA	16 MXL 025	<b>0F</b>	16	10,35	9,84	15	15	8,5	16	—	502	
		18 MXL 025	<b>0F</b>	18	11,64	11,12	16	16	8,5	16	—	503	
		20 MXL 025	<b>0F</b>	20	12,94	12,43	16	16	8,5	16	—	503	
		22 MXL 025	<b>1F</b>	22	14,23	13,72	17,5	10	11	16	3	504	
		24 MXL 025	<b>1F</b>	24	15,52	15,01	20	10	11	16	3	505	
		28 MXL 025	<b>1F</b>	28	18,11	17,60	25	11	11	16	3	506	
		30 MXL 025	<b>1F</b>	30	19,40	18,90	25	12	11	16	4	506	
		32 MXL 025	<b>1F</b>	32	20,70	20,19	26	14	11	16	4	507	
		36 MXL 025	<b>1F</b>	36	23,29	22,78	28	16	11	16	4	508	
		40 MXL 025	<b>1F</b>	40	25,87	25,37	32	18	11	16	4	509	
		42 MXL 025	<b>1F</b>	42	27,17	26,67	32	18	11	16	5	509	
		44 MXL 025	<b>1F</b>	44	28,46	27,95	36	18	11	16	5	510	
		SENZA FLANGIA	48 MXL 025	<b>2</b>	48	31,05	30,54	—	20	11	16	5	—
			60 MXL 025	<b>2</b>	60	38,81	38,30	—	24	11	16	5	—
72 MXL 025	<b>2</b>		72	46,57	46,06	—	25	11	16	6	—		

## PULEGGE DENTATE PER CINGHIE POSITIVE TIMING BELT PULLEYS

TIPO: **XL 037** PASSO 1/5" (mm 5,08)

CARATTERISTICHE		TIPO	ESEC.	N. DENTI	Dp PRIMITIVO	De ESTERNO	Df FLANGIA	Dm MOZZO	F	L	d	N° FLANGIA
ACCIAIO / ALLUMINIO	CON FLANGIA	10 XL 037	1F	10	16,17	15,66	23,0	9,5	14,3	20	—	1
		11 XL 037	1F	11	17,79	17,28	23,0	9,5	14,3	20	—	1
		12 XL 037	1F	12	19,40	18,90	25,0	10	14,3	20	—	2
		13 XL 037	1F	13	21,02	20,51	25,0	10	14,3	20	—	2
		14 XL 037	1F	14	22,64	22,13	28,0	15	14,3	20	—	4
		15 XL 037	1F	15	24,26	23,75	28,0	15	14,3	20	—	4
		16 XL 037	1F	16	25,87	25,36	32,0	16	14,3	20	—	5
		17 XL 037	1F	17	27,49	26,98	32,0	20	14,3	20	—	6
		18 XL 037	1F	18	29,11	28,60	35,0	20	14,3	20	—	7
		19 XL 037	1F	19	30,72	30,22	35,0	20	14,3	22	—	7
		20 XL 037	1F	20	32,34	31,83	38,0	23,5	14,3	22	—	9
		21 XL 037	1F	21	33,96	33,45	38,0	23,5	14,3	22	—	9
		22 XL 037	1F	22	35,57	35,07	41,0	25	14,3	22	6	10
		24 XL 037	1F	24	38,81	38,30	44,0	30	14,3	22	6	12
		26 XL 037	1F	26	42,04	41,53	48,0	30	14,3	22	8	11
		27 XL 037	1F	27	43,66	43,15	48,0	30	14,3	22	8	11
		28 XL 037	1F	28	45,28	44,77	51,0	34	14,3	22	8	16
		30 XL 037	1F	30	48,51	48,00	54,0	38	14,3	22	8	18
		32 XL 037	1F	32	51,74	51,24	57,0	38	14,3	25	8	20
		34 XL 037	1F	34	54,98	54,47	61,0	38	14,3	25	8	22
35 XL 037	1F	35	56,60	56,09	61,0	38	14,3	25	8	22		
ALLUMINIO	SENZA FLANGIA	36 XL 037	2	36	58,21	57,70	—	45	14,3	25	8	—
		38 XL 037	2	38	61,45	60,94	—	45	14,3	25	8	—
		40 XL 037	2	40	64,68	64,17	—	45	14,3	25	8	—
		42 XL 037	2	42	67,91	67,41	—	45	14,3	25	8	—
		44 XL 037	2	44	71,15	70,64	—	45	14,3	25	8	—
		48 XL 037	3	48	77,62	77,11	—	45	14,3	25	10	—
		60 XL 037	3	60	97,02	96,51	—	45	14,3	25	10	—
		72 XL 037	3	72	116,42	115,92	—	45	14,3	25	10	—

# PULEGGE DENTATE PER CINGHIE POSITIVE TIMING BELT PULLEYS

TIPO: **L 050** PASSO 3/8" (mm 9,52)

CARATTERISTICHE		TIPO	ESEC.	N. DENTI	Dp PRIMITIVO	De ESTERNO	Df FLANGIA	Dm MOZZO	F	L	d	N° FLANGIA
ACCIAIO	CON FLANGIA	10 L 050	1F	10	30,33	29,56	37,0	20	19,0	28	8	50
		11 L 050	1F	11	33,35	32,59	37,0	22	19,0	30	8	50
		12 L 050	1F	12	36,37	35,62	43,0	24	19,0	30	8	52
		13 L 050	1F	13	39,41	38,65	44,0	28	19,0	30	8	83
		14 L 050	1F	14	42,44	41,68	48,0	28	19,0	30	8	54
		15 L 050	1F	15	45,48	44,72	51,0	34	19,0	30	8	55
		16 L 050	1F	16	48,51	47,75	54,0	36	19,0	32	8	56
		17 L 050	1F	17	51,54	50,78	57,0	36	19,0	32	10	57
		18 L 050	1F	18	54,59	53,81	60,0	40	19,0	32	10	58
		19 L 050	1F	19	57,61	56,84	64,0	40	19,0	32	10	59
		20 L 050	1F	20	60,63	59,88	66,5	40	19,0	32	10	60
		21 L 050	1F	21	63,68	62,91	70,0	45	19,0	32	10	61
		22 L 050	1F	22	66,70	65,94	75,0	45	19,0	32	10	62
		23 L 050	1F	23	69,73	68,97	79,0	55	19,0	32	10	63
		24 L 050	1F	24	72,77	72,00	79,0	55	19,0	32	10	63
		25 L 050	1F	25	75,80	75,04	82,5	58	19,0	32	10	64
		26 L 050	1F	26	78,84	78,07	86,0	58	19,0	32	11	65
		27 L 050	1F	27	81,86	81,10	86,0	58	19,0	32	11	65
		28 L 050	1F	28	84,89	84,13	91,0	58	19,0	32	11	66
		30 L 050	1F	30	90,96	90,20	97,0	70	19,0	32	11	68
		32 L 050	1F	32	97,03	96,26	102,0	70	19,0	32	11	70
		33 L 050	1F	33	100,05	99,29	106,0	70	19,0	32	11	71
		34 L 050	1F	34	103,08	102,32	112,0	70	19,0	32	11	72
		35 L 050	1F	35	106,12	105,35	112,0	70	19,0	32	11	72
		36 L 050	1F	36	109,14	108,39	115,0	70	19,0	32	11	74
		40 L 050	1F	40	121,29	120,51	128,0	70	19,0	32	11	78
		42 L 050	1F	42	127,34	126,57	135,0	70	19,0	32	11	80
		44 L 050	1F	44	133,40	132,64	142,0	70	19,0	32	11	81
45 L 050	1F	45	136,44	135,67	142,0	70	19,0	32	11	81		
48 L 050	1F	48	145,54	144,77	150,0	70	19,0	32	11	85		
GHISA	SENZA FLANGIA	50 L 050	4	50	151,60	150,83	—	70	19,0	32	14	—
		52 L 050	4	52	157,66	156,90	—	70	19,0	32	14	—
		56 L 050	4	56	169,79	169,02	—	70	19,0	32	14	—
		57 L 050	4	57	172,82	172,06	—	70	19,0	32	14	—
		60 L 050	4	60	181,92	181,15	—	75	19,0	42	14	—
		72 L 050	4	72	218,29	217,53	—	75	19,0	42	14	—
		84 L 050	4	84	254,69	253,92	—	75	19,0	42	14	—
		96 L 050	4	96	291,06	290,30	—	75	19,0	42	14	—



# PULEGGE DENTATE PER CINGHIE POSITIVE TIMING BELT PULLEYS

TIPO: **L 075** PASSO 3/8" (mm 9,52)

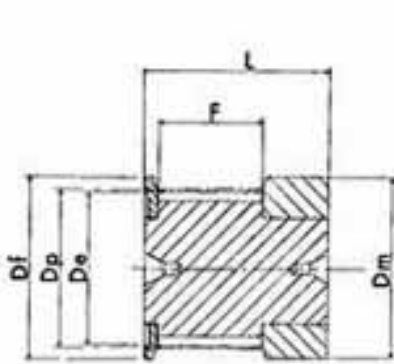
CARATTERISTICHE		TIPO	ESEC.	N. DENTI	Dp PRIMITIVO	De ESTERNO	Df FLANGIA	Dm MOZZO	F	L	d	N° FLANGIA
ACCIAIO	CON FLANGIA	10 L 075	1F	10	30,33	29,56	37,0	20	25,4	38	8	50
		11 L 075	1F	11	33,35	32,59	37,0	22	25,4	38	8	50
		12 L 075	1F	12	36,37	35,62	43,0	24	25,4	38	8	52
		13 L 075	1F	13	39,41	38,65	44,0	28	25,4	38	8	83
		14 L 075	1F	14	42,44	41,68	48,0	28	25,4	38	11	54
		15 L 075	1F	15	45,48	44,72	51,0	34	25,4	38	11	55
		16 L 075	1F	16	48,51	47,75	54,0	36	25,4	38	11	56
		17 L 075	1F	17	51,54	50,78	57,0	36	25,4	38	11	57
		18 L 075	1F	18	54,59	53,81	60,0	40	25,4	38	11	58
		19 L 075	1F	19	57,61	56,84	64,0	40	25,4	38	11	59
		20 L 075	1F	20	60,63	59,88	66,5	40	25,4	38	11	60
		21 L 075	1F	21	63,68	62,91	70,0	45	25,4	38	11	61
		22 L 075	1F	22	66,70	65,94	75,0	45	25,4	38	11	62
		23 L 075	1F	23	69,73	68,97	79,0	55	25,4	38	11	63
		24 L 075	1F	24	72,77	72,00	79,0	55	25,4	38	11	63
		25 L 075	1F	25	75,80	75,04	82,5	58	25,4	38	11	64
		26 L 075	1F	26	78,84	78,07	86,0	58	25,4	38	11	65
		27 L 075	1F	27	81,86	81,10	86,0	58	25,4	38	11	65
		28 L 075	1F	28	84,89	84,13	91,0	58	25,4	38	11	66
		30 L 075	1F	30	90,96	90,20	97,0	70	25,4	38	11	68
		32 L 075	1F	32	97,03	96,26	102,0	70	25,4	38	11	70
		33 L 075	1F	33	100,05	99,29	106,0	70	25,4	38	11	71
		34 L 075	1F	34	103,08	102,32	112,0	70	25,4	38	11	72
		35 L 075	1F	35	106,12	105,35	112,0	70	25,4	38	11	72
		36 L 075	1F	36	109,14	108,39	115,0	70	25,4	38	11	74
		40 L 075	1F	40	121,29	120,51	128,0	70	25,4	38	11	78
		42 L 075	1F	42	127,34	126,57	135,0	70	25,4	38	11	80
		44 L 075	1F	44	133,40	132,64	142,0	70	25,4	38	11	81
45 L 075	1F	45	136,44	135,67	142,0	70	25,4	38	11	81		
48 L 075	1F	48	145,54	144,77	150,0	70	25,4	38	11	85		
GHISA	SENZA FLANGIA	50 L 075	4	50	151,60	150,83	—	70	25,4	38	14	—
		52 L 075	4	52	157,66	156,90	—	70	25,4	38	14	—
		56 L 075	4	56	169,79	169,02	—	70	25,4	38	14	—
		57 L 075	4	57	172,82	172,06	—	70	25,4	38	14	—
		60 L 075	4	60	181,92	181,15	—	75	25,4	45	14	—
		72 L 075	4	72	218,29	217,53	—	75	25,4	45	14	—
		84 L 075	4	84	254,69	253,92	—	75	25,4	45	14	—
		96 L 075	4	96	291,06	290,30	—	75	25,4	45	14	—

# PULEGGE DENTATE PER CINGHIE POSITIVE TIMING BELT PULLEYS

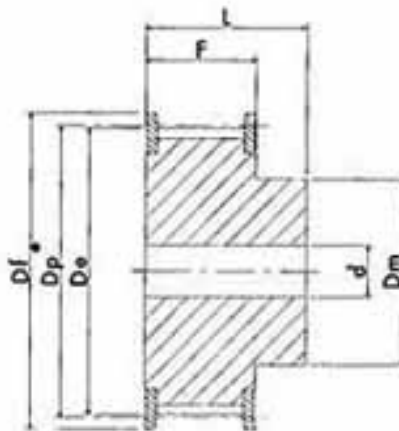
TIPO: **L 100** PASSO 3/8" (mm 9,52)

CARATTERISTICHE		TIPO	ESEC.	N. DENTI	Dp PRIMITIVO	De ESTERNO	Df FLANGIA	Dm MOZZO	F	L	d	N° FLANGIA
ACCIAIO	CON FLANGIA	10 L 100	1F	10	30,33	29,56	37,0	20	31,8	45	8	50
		11 L 100	1F	11	33,35	32,59	37,0	22	31,8	45	8	50
		12 L 100	1F	12	36,37	35,62	43,0	24	31,8	45	8	52
		13 L 100	1F	13	39,41	38,65	44,0	28	31,8	45	8	83
		14 L 100	1F	14	42,44	41,68	48,0	28	31,8	45	11	54
		15 L 100	1F	15	45,48	44,72	51,0	34	31,8	45	11	55
		16 L 100	1F	16	48,51	47,75	54,0	36	31,8	45	11	56
		17 L 100	1F	17	51,54	50,78	57,0	36	31,8	45	11	57
		18 L 100	1F	18	54,59	53,81	60,0	40	31,8	45	11	58
		19 L 100	1F	19	57,61	56,84	64,0	40	31,8	45	11	59
		20 L 100	1F	20	60,63	59,88	66,5	40	31,8	45	11	60
		21 L 100	1F	21	63,68	62,91	70,0	45	31,8	45	11	61
		22 L 100	1F	22	66,70	65,94	75,0	45	31,8	45	11	62
		23 L 100	1F	23	69,73	68,97	79,0	55	31,8	45	11	63
		24 L 100	1F	24	72,77	72,00	79,0	55	31,8	45	11	63
		25 L 100	1F	25	75,80	75,04	82,5	58	31,8	45	11	64
		26 L 100	1F	26	78,84	78,07	86,0	58	31,8	45	11	65
		27 L 100	1F	27	81,86	81,10	86,0	58	31,8	45	11	65
		28 L 100	1F	28	84,89	84,13	91,0	58	31,8	45	11	66
		30 L 100	1F	30	90,96	90,20	97,0	70	31,8	45	11	68
		32 L 100	1F	32	97,03	96,26	102,0	70	31,8	45	11	70
		33 L 100	1F	33	100,05	99,29	106,0	70	31,8	45	11	71
		34 L 100	1F	34	103,08	102,32	112,0	70	31,8	45	11	72
		35 L 100	1F	35	106,12	105,35	112,0	70	31,8	45	11	72
		36 L 100	1F	36	109,14	108,39	115,0	70	31,8	45	11	74
		40 L 100	1F	40	121,29	120,51	128,0	70	31,8	45	11	78
		42 L 100	1F	42	127,34	126,57	135,0	70	31,8	45	11	80
		44 L 100	1F	44	133,40	132,64	142,0	70	31,8	45	11	81
45 L 100	1F	45	136,44	135,67	142,0	70	31,8	45	11	81		
48 L 100	1F	48	145,54	144,77	150,0	70	31,8	45	11	85		
GHISA	SENZA FLANGIA	50 L 100	4	50	151,60	150,83	—	70	31,8	45	14	—
		52 L 100	4	52	157,66	156,90	—	70	31,8	45	14	—
		56 L 100	4	56	169,79	169,02	—	70	31,8	45	14	—
		57 L 100	4	57	172,82	172,06	—	70	31,8	45	14	—
		60 L 100	4	60	181,92	181,15	—	75	31,8	45	14	—
		72 L 100	4	72	218,29	217,53	—	75	31,8	45	14	—
		84 L 100	4	84	254,69	253,92	—	75	31,8	45	14	—
		96 L 100	4	96	291,06	290,30	—	75	31,8	45	14	—

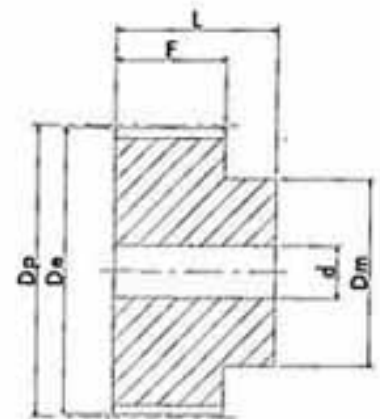
## PULEGGE DENTATE PER CINGHIE POSITIVE TIMING BELT PULLEYS



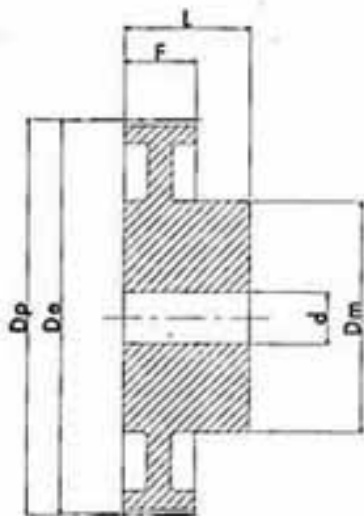
esecuzione 0F



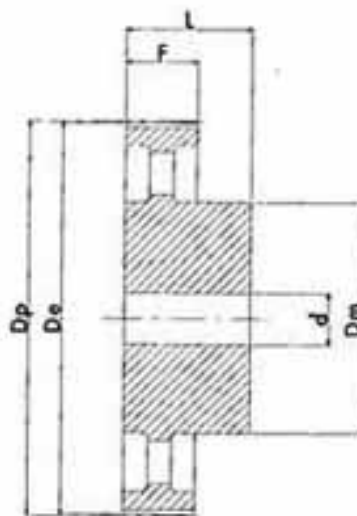
esecuzione 1F



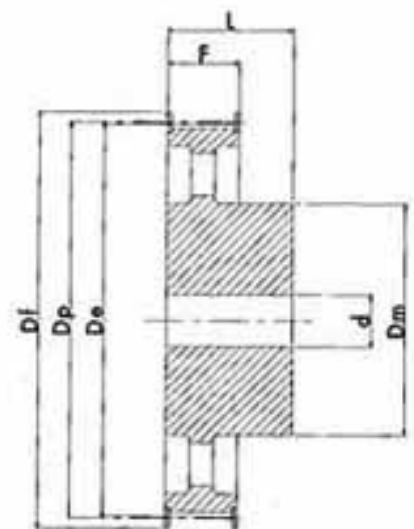
esecuzione 2



esecuzione 3



esecuzione 4



esecuzione 5F

## PULEGGE DENTATE PER CINGHIE POSITIVE TIMING BELT PULLEYS

TIPO: **H 075** PASSO 1/2" (mm 12,7)

CARATTERISTICHE		TIPO	ESEC.	N. DENTI	Dp PRIMITIVO	De ESTERNO	Df FLANGIA	Dm MOZZO	F	L	d	N° FLANGIA
ACCIAIO	CON FLANGIA	14 H 075	1F	14	56,59	55,22	64,0	40	26,4	40	—	59
		15 H 075	1F	15	60,64	59,27	66,5	45	26,4	40	—	60
		16 H 075	1F	16	64,67	63,31	70,0	45	26,4	40	—	61
		17 H 075	1F	17	68,72	67,35	75,0	45	26,4	40	—	62
		18 H 075	1F	18	72,77	71,39	79,0	55	26,4	40	—	63
		19 H 075	1F	19	76,81	75,44	82,5	60	26,4	40	11	64
		20 H 075	1F	20	80,85	79,48	87,0	62	26,4	40	11	76
		21 H 075	1F	21	84,89	83,52	91,0	65	26,4	40	11	66
		22 H 075	1F	22	88,93	87,56	94,0	68	26,4	40	11	67
		23 H 075	1F	23	92,98	91,61	97,0	72	26,4	40	11	68
		24 H 075	1F	24	97,03	95,65	102,0	72	26,4	40	11	70
		25 H 075	1F	25	101,06	99,69	106,0	72	26,4	40	11	71
		26 H 075	1F	26	105,11	103,73	112,0	80	26,4	40	11	72
		27 H 075	1F	27	109,15	107,78	115,0	80	26,4	40	11	74
		28 H 075	1F	28	113,18	111,82	120,0	80	26,4	40	11	75
		30 H 075	1F	30	121,29	119,90	128,0	80	26,4	40	11	78
		32 H 075	1F	32	129,30	127,99	135,0	80	26,4	40	11	80
		33 H 075	1F	33	133,40	132,03	142,0	80	26,4	40	11	81
		34 H 075	1F	34	137,45	136,07	142,0	80	26,4	40	11	81
		35 H 075	1F	35	141,49	140,12	150,0	80	26,4	40	11	85
		36 H 075	1F	36	145,54	144,16	150,0	80	26,4	40	11	85
		38 H 075	1F	38	153,62	152,24	158,0	80	26,4	40	11	86
40 H 075	1F	40	161,70	160,33	168,0	80	26,4	40	11	90		
42 H 075	1F	42	169,79	168,41	184,0	80	26,4	40	11	94		
GHISA		44 H 075	5F	44	177,80	176,50	184,0	80	26,4	40	14	95
		48 H 075	5F	48	194,03	192,67	200,0	90	26,4	45	14	100
	SENZA FLANGIA	50 H 075	4	50	202,13	200,75	—	90	26,4	45	14	—

# PULEGGE DENTATE PER CINGHIE POSITIVE TIMING BELT PULLEYS

TIPO: **H 100** PASSO 1/2" (mm 12,7)

CARATTERISTICHE	TIPO	ESEC.	N. DENTI	Dp PRIMITIVO	De ESTERNO	Df FLANGIA	Dm MOZZO	F	L	d	N° FLANGIA			
ACCIAIO	CON FLANGIA	14 H 100	1F	14	56,59	55,22	64,0	40	31,8	45	—	59		
		15 H 100	1F	15	60,64	59,27	66,5	45	31,8	45	—	60		
		16 H 100	1F	16	64,67	63,31	70,0	45	31,8	45	—	61		
		17 H 100	1F	17	68,72	67,35	75,0	45	31,8	45	—	62		
		18 H 100	1F	18	72,77	71,39	79,0	55	31,8	45	—	63		
		19 H 100	1F	19	76,81	75,44	82,5	60	31,8	45	14	64		
		20 H 100	1F	20	80,85	79,48	87,0	62	31,8	45	14	76		
		21 H 100	1F	21	84,89	83,52	91,0	65	31,8	45	14	66		
		22 H 100	1F	22	88,93	87,56	94,0	68	31,8	45	14	67		
		23 H 100	1F	23	92,98	91,61	97,0	72	31,8	45	14	68		
		24 H 100	1F	24	97,03	95,65	102,0	72	31,8	45	14	70		
		25 H 100	1F	25	101,06	99,69	106,0	72	31,8	45	14	71		
		26 H 100	1F	26	105,11	103,73	112,0	80	31,8	45	14	72		
		27 H 100	1F	27	109,15	107,78	115,0	80	31,8	45	14	74		
		28 H 100	1F	28	113,18	111,82	120,0	80	31,8	45	14	75		
		29 H 100	1F	29	117,23	115,86	120,0	80	31,8	45	14	75		
		30 H 100	1F	30	121,29	119,90	128,0	80	31,8	45	14	78		
		32 H 100	1F	32	129,30	127,99	135,0	80	31,8	45	14	80		
		33 H 100	1F	33	133,40	132,03	142,0	80	31,8	45	14	81		
		34 H 100	1F	34	137,45	136,07	142,0	80	31,8	45	14	81		
		35 H 100	1F	35	141,49	140,12	150,0	80	31,8	45	14	85		
		36 H 100	1F	36	145,54	144,16	150,0	80	31,8	45	14	85		
		38 H 100	1F	38	153,62	152,24	158,0	80	31,8	45	14	86		
		40 H 100	1F	40	161,70	160,33	168,0	80	31,8	45	14	90		
		42 H 100	1F	42	169,79	168,41	180,0	80	31,8	45	14	94		
		GHISA	SENZA FLANGIA	44 H 100	5F	44	177,88	176,50	184,0	80	31,8	50	14	95
				45 H 100	5F	45	181,91	180,54	192,0	80	31,8	50	14	96
				48 H 100	5F	48	194,03	192,67	200,0	90	31,8	50	14	100
				50 H 100	4	50	202,13	200,75	—	90	31,8	50	19	—
				52 H 100	4	52	210,21	208,84	—	90	31,8	50	19	—
				58 H 100	4	58	234,47	233,09	—	90	31,8	50	19	—
			60 H 100	4	60	242,55	241,18	—	120	31,8	50	19	—	
			70 H 100	4	70	282,98	281,61	—	120	31,8	55	19	—	
			72 H 100	4	72	291,06	289,69	—	120	31,8	55	19	—	
			84 H 100	4	84	339,57	338,20	—	120	31,8	55	19	—	
			96 H 100	4	96	388,09	386,71	—	120	31,8	60	19	—	
			120 H 100	4	120	485,12	483,73	—	120	31,8	60	19	—	

# PULEGGE DENTATE PER CINGHIE POSITIVE

## TIMING BELT PULLEYS

TIPO: **H 150** PASSO 1/2" (mm 12,7)

CARATTERISTICHE		TIPO	ESEC.	N. DENTI	Dp PRIMITIVO	De ESTERNO	Df FLANGIA	Dm MOZZO	F	L	d	N° FLANGIA
ACCIAIO	CON FLANGIA	14 H 150	1F	14	56,59	55,22	64,0	42	46,0	58	—	59
		15 H 150	1F	15	60,64	59,27	66,5	45	46,0	58	—	60
		16 H 150	1F	16	64,67	63,31	70,0	45	46,0	58	—	61
		17 H 150	1F	17	68,72	67,35	75,0	45	46,0	58	—	62
		18 H 150	1F	18	72,77	71,39	79,0	55	46,0	58	—	63
		19 H 150	1F	19	76,81	75,44	82,5	60	46,0	58	—	64
		20 H 150	1F	20	80,85	79,48	87,0	62	46,0	58	—	76
		21 H 150	1F	21	84,89	83,52	91,0	65	46,0	58	—	66
		22 H 150	1F	22	88,93	87,56	94,0	68	46,0	58	—	67
		23 H 150	1F	23	92,98	91,61	97,0	72	46,0	58	—	68
		24 H 150	1F	24	97,03	95,65	102,0	72	46,0	58	—	70
		25 H 150	1F	25	101,06	99,69	106,0	72	46,0	58	—	71
		26 H 150	1F	26	105,11	103,73	112,0	80	46,0	58	—	72
		27 H 150	1F	27	109,15	107,78	115,0	80	46,0	58	—	74
		28 H 150	1F	28	113,18	111,82	120,0	80	46,0	58	—	75
		29 H 150	1F	29	117,23	115,86	120,0	80	46,0	58	—	75
		30 H 150	1F	30	121,29	119,90	128,0	80	46,0	58	—	78
		32 H 150	1F	32	129,30	127,99	135,0	80	46,0	58	—	80
		33 H 150	1F	33	133,40	132,03	142,0	80	46,0	58	—	81
		34 H 150	1F	34	137,45	136,07	142,0	80	46,0	58	—	81
		35 H 150	1F	35	141,49	140,12	150,0	80	46,0	58	—	85
		36 H 150	1F	36	145,54	144,16	150,0	80	46,0	58	—	85
38 H 150	1F	38	153,62	152,24	158,0	80	46,0	58	—	86		
40 H 150	1F	40	161,70	160,33	168,0	80	46,0	58	—	90		
42 H 150	1F	42	169,79	168,41	180,0	80	46,0	58	—	94		
GHISA	CON FLANGIA	44 H 150	5F	44	177,88	176,50	184,0	80	46,0	58	19	95
		45 H 150	5F	45	181,91	180,54	192,0	80	46,0	58	19	96
		48 H 150	5F	48	194,03	192,67	200,0	90	46,0	65	19	100
	SENZA FLANGIA	50 H 150	4	50	202,13	200,75	—	90	46,0	65	19	—
		52 H 150	4	52	210,21	208,84	—	90	46,0	65	19	—
		58 H 150	4	58	234,47	233,09	—	90	46,0	65	19	—
		60 H 150	4	60	242,55	241,18	—	120	46,0	65	19	—
		70 H 150	4	70	282,98	281,61	—	120	46,0	65	24	—
		72 H 150	4	72	291,06	289,69	—	120	46,0	65	24	—
		84 H 150	4	84	339,57	338,20	—	120	46,0	65	24	—
		96 H 150	4	96	388,09	386,71	—	120	46,0	65	24	—
120 H 150	4	120	485,12	483,73	—	120	46,0	65	24	—		

# PULEGGE DENTATE PER CINGHIE POSITIVE TIMING BELT PULLEYS

TIPO: **H 200** PASSO 1/2" (mm 12,7)

CARATTERISTICHE	TIPO	ESEC.	N. DENTI	Dp PRIMITIVO	De ESTERNO	Df FLANGIA	Dm MOZZO	F	L	d	N° FLANGIA			
ACCIAIO	CON FLANGIA	14 H 200	1F	14	56,59	55,22	64,0	42	58,7	70	—	59		
		15 H 200	1F	15	60,64	59,27	66,5	45	58,7	70	—	60		
		16 H 200	1F	16	64,67	63,31	70,0	45	58,7	70	—	61		
		17 H 200	1F	17	68,72	67,35	75,0	45	58,7	70	—	62		
		18 H 200	1F	18	72,77	71,39	79,0	55	58,7	70	—	63		
		19 H 200	1F	19	76,81	75,44	82,5	60	58,7	70	—	64		
		20 H 200	1F	20	80,85	79,48	87,0	62	58,7	70	—	76		
		21 H 200	1F	21	84,89	83,52	91,0	65	58,7	70	—	66		
		22 H 200	1F	22	88,93	87,56	94,0	68	58,7	70	—	67		
		23 H 200	1F	23	92,98	91,61	97,0	72	58,7	70	—	68		
		24 H 200	1F	24	97,03	95,65	102,0	72	58,7	70	—	70		
		25 H 200	1F	25	101,06	99,69	106,0	72	58,7	70	—	71		
		26 H 200	1F	26	105,11	103,73	112,0	80	58,7	70	—	72		
		27 H 200	1F	27	109,15	107,78	115,0	80	58,7	70	—	74		
		28 H 200	1F	28	113,18	111,82	120,0	80	58,7	70	—	75		
		29 H 200	1F	29	117,23	115,86	120,0	80	58,7	70	—	75		
		30 H 200	1F	30	121,29	119,90	128,0	80	58,7	70	—	78		
		32 H 200	1F	32	129,30	127,99	135,0	80	58,7	70	—	80		
		33 H 200	1F	33	133,40	132,03	142,0	80	58,7	70	—	81		
		34 H 200	1F	34	137,45	136,07	142,0	80	58,7	70	—	81		
		35 H 200	1F	35	141,49	140,12	150,0	80	58,7	70	—	85		
		36 H 200	1F	36	145,54	144,16	150,0	80	58,7	70	—	85		
		38 H 200	1F	38	153,62	152,24	158,0	80	58,7	70	—	86		
		40 H 200	1F	40	161,70	160,33	168,0	80	58,7	70	—	90		
		42 H 200	1F	42	169,79	168,41	180,0	80	58,7	70	—	94		
		GHISA	CON FLANGIA	44 H 200	5F	44	177,88	176,50	184,0	80	58,7	70	19	95
				45 H 200	5F	45	181,91	180,54	192,0	80	58,7	70	19	96
				48 H 200	5F	48	194,03	192,67	200,0	90	58,7	75	24	100
			SENZA FLANGIA	50 H 200	4	50	202,13	200,75	—	90	58,7	75	24	—
				52 H 200	4	52	210,21	208,84	—	90	58,7	75	24	—
				58 H 200	4	58	234,47	233,09	—	90	58,7	75	24	—
				60 H 200	4	60	242,55	241,18	—	120	58,7	75	24	—
				70 H 200	4	70	282,98	281,61	—	120	58,7	75	28	—
				72 H 200	4	72	291,06	289,69	—	120	58,7	75	28	—
				84 H 200	4	84	339,57	338,20	—	120	58,7	75	28	—
				96 H 200	4	96	388,09	386,71	—	120	58,7	75	28	—
				120 H 200	4	120	485,12	483,73	—	120	58,7	75	28	—

# PULEGGE DENTATE PER CINGHIE POSITIVE TIMING BELT PULLEYS

TIPO: **H 300** PASSO 1/2" (mm 12,7)

CARATTERISTICHE		TIPO	ESEC.	N. DENTI	Dp PRIMITIVO	De ESTERNO	Df FLANGIA	Dm MOZZO	F	L	d	N° FLANGIA
ACCIAIO	CON FLANGIA	14 H 300	1F	14	56,59	55,22	64,0	42	85,7	100	—	59
		15 H 300	1F	15	60,64	59,27	66,5	45	85,7	100	—	60
		16 H 300	1F	16	64,67	63,31	70,0	45	85,7	100	—	61
		17 H 300	1F	17	68,72	67,35	75,0	45	85,7	100	—	62
		18 H 300	1F	18	72,77	71,39	79,0	55	85,7	100	—	63
		19 H 300	1F	19	76,81	75,44	82,5	60	85,7	100	—	64
		20 H 300	1F	20	80,85	79,48	87,0	62	85,7	100	—	76
		21 H 300	1F	21	84,89	83,52	91,0	65	85,7	100	—	66
		22 H 300	1F	22	88,93	87,56	94,0	68	85,7	100	—	67
		23 H 300	1F	23	92,98	91,61	97,0	72	85,7	100	—	68
		24 H 300	1F	24	97,03	95,65	102,0	72	85,7	100	—	70
		25 H 300	1F	25	101,06	99,69	106,0	72	85,7	100	—	71
		26 H 300	1F	26	105,11	103,73	112,0	80	85,7	100	—	72
		27 H 300	1F	27	109,15	107,78	115,0	80	85,7	100	—	74
		28 H 300	1F	28	113,18	111,82	120,0	80	85,7	100	—	75
		30 H 300	1F	30	121,29	119,90	128,0	80	85,7	100	—	78
		32 H 300	1F	32	129,30	127,99	135,0	80	85,7	100	—	80
		33 H 300	1F	33	133,40	132,03	142,0	80	85,7	100	—	81
		34 H 300	1F	34	137,45	136,07	142,0	80	85,7	100	—	81
		35 H 300	1F	35	141,49	140,12	150,0	80	85,7	100	—	85
		36 H 300	1F	36	145,54	144,16	150,0	80	85,7	100	—	85
38 H 300	1F	38	153,62	152,24	158,0	80	85,7	100	—	86		
40 H 300	1F	40	161,70	160,33	168,0	80	85,7	100	—	90		
42 H 300	1F	42	169,79	168,41	180,0	80	85,7	100	—	94		
GHISA	SENZA FLANGIA	44 H 300	4	44	177,88	176,50	—	80	85,7	100	24	—
		48 H 300	4	48	194,03	192,67	—	90	85,7	100	24	—
		50 H 300	4	50	202,13	200,75	—	90	85,7	100	24	—
		58 H 300	4	58	234,47	233,09	—	90	85,7	100	24	—
		60 H 300	4	60	242,55	241,18	—	120	85,7	100	24	—
		72 H 300	4	72	291,06	289,69	—	120	85,7	100	28	—
		84 H 300	4	84	339,57	338,20	—	120	85,7	100	28	—
		96 H 300	4	96	388,09	386,71	—	120	85,7	100	28	—
		120 H 300	4	120	485,12	483,73	—	120	85,7	100	28	—



## PULEGGE DENTATE PER CINGHIE POSITIVE TIMING BELT PULLEYS

TIPO: **XH 200** PASSO 7/8" (mm 22,22)

CARATTERISTICHE		TIPO	ESEC.	N. DENTI	Dp PRIMITIVO	De ESTERNO	Df FLANGIA	Dm MOZZO	F	L	d	N° FLANGIA
ACCIAIO	CON FLANGIA	18 XH 200	<b>1F</b>	18	127,34	124,55	140,0	100	65	80	24	155
		19 XH 200	<b>1F</b>	19	134,41	131,62	146,0	100	65	80	24	156
		20 XH 200	<b>1F</b>	20	141,49	138,69	155,0	100	65	80	24	157
		21 XH 200	<b>1F</b>	21	148,56	145,77	160,0	110	65	80	24	158
		22 XH 200	<b>1F</b>	22	155,64	152,84	170,0	110	65	80	24	159
		24 XH 200	<b>1F</b>	24	169,79	166,99	184,0	120	65	80	24	161
		25 XH 200	<b>1F</b>	25	176,86	174,07	188,0	120	65	80	24	162
		26 XH 200	<b>1F</b>	26	183,93	181,14	198,0	120	65	80	24	163
		27 XH 200	<b>1F</b>	27	191,01	188,22	205,0	120	65	80	24	164
		28 XH 200	<b>1F</b>	28	198,09	195,29	212,0	120	65	80	24	165
		30 XH 200	<b>1F</b>	30	212,23	209,44	227,0	120	65	80	24	167
		32 XH 200	<b>1F</b>	32	226,38	223,59	240,0	120	65	80	24	169
		34 XH 200	<b>1F</b>	34	240,53	237,74	256,0	120	65	80	24	170
GHISA	SENZA FLANGIA	*38 XH 200	<b>4</b>	38	268,83	266,03	—	150	65	80	28	—
		*40 XH 200	<b>4</b>	40	282,98	280,18	—	150	65	100	28	—
		*48 XH 200	<b>4</b>	48	339,57	336,78	—	150	65	100	28	—
		*60 XH 200	<b>4</b>	60	424,47	421,67	—	150	65	100	28	—
		*72 XH 200	<b>4</b>	72	509,36	506,56	—	160	65	100	28	—
		*84 XH 200	<b>4</b>	84	594,25	591,46	—	160	65	100	28	—
		*96 XH 200	<b>4</b>	96	679,15	676,35	—	160	65	100	28	—
		*120 XH 200	<b>4</b>	120	848,93	846,14	—	160	65	100	28	—

## PULEGGE DENTATE PER CINGHIE POSITIVE TIMING BELT PULLEYS

TIPO: **XH 300** PASSO 7/8" (mm 22,22)

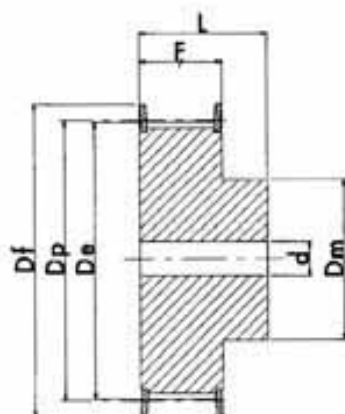
CARATTERISTICHE		TIPO	ESEC.	N DENTI	Dp PRIMITIVO	De ESTERNO	Df FLANGIA	Dm MOZZO	F	L	d	N° FLANGIA
ACCIAIO	CON FLANGIA	18 XH 300	1F	18	127,34	124,55	140,0	100	90,5	110	28	155
		19 XH 300	1F	19	134,41	131,62	146,0	100	90,5	110	28	156
		20 XH 300	1F	20	141,49	138,69	155,0	100	90,5	110	28	157
		21 XH 300	1F	21	148,56	145,77	160,0	110	90,5	110	28	158
		22 XH 300	1F	22	155,64	152,84	170,0	110	90,5	110	28	159
		24 XH 300	1F	24	169,79	166,99	184,0	120	90,5	110	28	161
		25 XH 300	1F	25	176,86	174,07	188,0	120	90,5	110	28	162
		26 XH 300	1F	26	183,93	181,14	198,0	120	90,5	110	28	163
		27 XH 300	1F	27	191,01	188,22	205,0	120	90,5	110	28	164
		28 XH 300	1F	28	198,09	195,29	212,0	150	90,5	110	28	165
		30 XH 300	1F	30	212,23	209,44	227,0	150	90,5	110	28	167
		32 XH 300	1F	32	226,38	223,59	240,0	150	90,5	110	28	169
		34 XH 300	1F	34	240,53	237,74	256,0	150	90,5	110	28	170
		GHISA	SENZA FLANGIA	*38 XH 300	4	38	268,83	266,03	—	150	90,5	120
*40 XH 300	4			40	282,98	280,18	—	150	90,5	120	32	—
*48 XH 300	4			48	339,57	336,78	—	175	90,5	120	32	—
*60 XH 300	4			60	424,47	421,67	—	175	90,5	120	32	—
*72 XH 300	4			72	509,36	506,56	—	175	90,5	120	32	—
*84 XH 300	4			84	594,25	591,46	—	175	90,5	120	32	—
*96 XH 300	4			96	679,15	676,35	—	175	90,5	120	32	—
*120 XH 300	4			120	848,93	846,14	—	175	90,5	120	32	—

TIPO: **XH 400** PASSO 7/8" (mm 22,22)

CARATTERISTICHE		TIPO	ESEC.	N DENTI	Dp PRIMITIVO	De ESTERNO	Df FLANGIA	Dm MOZZO	F	L	d	N° FLANGIA
ACCIAIO	CON FLANGIA	18 XH 400	1F	18	127,34	124,55	140,0	100	118	132	32	155
		19 XH 400	1F	19	134,41	131,62	146,0	100	118	132	32	156
		20 XH 400	1F	20	141,49	138,69	155,0	100	118	132	32	157
		21 XH 400	1F	21	148,56	145,77	160,0	110	118	132	32	158
		22 XH 400	1F	22	155,64	152,84	170,0	110	118	132	32	159
		24 XH 400	1F	24	169,79	166,99	184,0	120	118	132	32	161
		25 XH 400	1F	25	176,86	174,07	188,0	120	118	132	32	162
		26 XH 400	1F	26	183,93	181,14	198,0	120	118	132	32	163
		27 XH 400	1F	27	191,01	188,22	205,0	120	118	132	32	164
		28 XH 400	1F	28	198,09	195,29	212,0	150	118	132	32	165
		30 XH 400	1F	30	212,23	209,44	227,0	150	118	132	32	167
		32 XH 400	1F	32	226,38	223,59	240,0	150	118	132	32	169
		34 XH 400	1F	34	240,53	237,74	256,0	150	118	132	32	170
		GHISA	SENZA FLANGIA	*38 XH 400	4	38	268,83	266,03	—	150	118	132
*40 XH 400	4			40	282,98	280,18	—	150	118	132	32	—
*48 XH 400	4			48	339,57	336,78	—	175	118	132	32	—
*60 XH 400	4			60	424,47	421,67	—	175	118	132	32	—
*72 XH 400	4			72	509,36	506,56	—	175	118	132	32	—
*84 XH 400	4			84	594,25	591,46	—	175	118	132	32	—
*96 XH 400	4			96	679,15	676,35	—	175	118	132	32	—
*120 XH 400	4			120	848,93	846,14	—	175	118	132	32	—

# PULEGGE PER CINGHIE DENTATE PASSO METRICO "AT" PULLEYS FOR METRIC BELTS "AT"

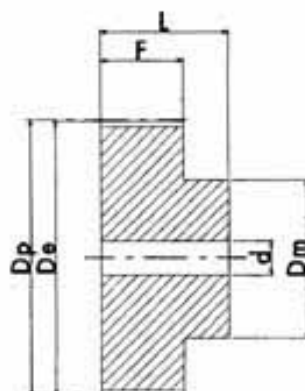
## AT 5 (PASSO 5 mm) PER CINGHIA LARGHEZZA 10 mm.



esecuzione 1F

	DESCRIZ.	ESEC.	N. DENTI	De	Df	Dm	F	L	d	N° FLANGIA
ALLUMINIO	21 AT5 12	1F	12	17,85	23,0	11	15	21	—	1
	21 AT5 14	1F	14	21,05	25,0	13	15	21	—	2
	21 AT5 15	1F	15	22,65	28,0	16	15	21	6	4
	21 AT5 16	1F	16	24,20	32,0	18	15	21	6	5
	21 AT5 18	1F	18	27,40	32,0	20	15	21	6	6
	21 AT5 19	1F	19	29,00	36,0	22	15	21	6	8
	21 AT5 20	1F	20	30,60	36,0	23	15	21	6	8
	21 AT5 22	1F	22	33,85	38,0	24	15	21	6	9
	21 AT5 24	1F	24	37,00	42,0	26	15	21	6	13
	21 AT5 25	1F	25	38,60	44,0	26	15	21	6	12
	21 AT5 26	1F	26	40,20	44,0	26	15	21	6	12
	21 AT5 27	1F	27	41,80	48,0	30	15	21	8	11
	21 AT5 28	1F	28	43,35	48,0	32	15	21	8	11
	21 AT5 30	1F	30	46,55	51,0	34	15	21	8	16
	21 AT5 32	1F	32	49,70	54,0	38	15	21	8	18
	21 AT5 36	1F	36	56,05	64,0	38	15	21	8	23
	21 AT5 40	1F	40	62,45	66,5	40	15	21	8	24
	21 AT5 42	1F	42	65,60	70,0	40	15	21	8	26
	21 AT5 44	2	44	68,80	—	45	15	21	8	—
	21 AT5 48	2	48	75,15	—	50	15	21	8	—
21 AT5 60	2	60	94,25	—	65	15	21	8	—	

## AT 5 (PASSO 5 mm) PER CINGHIA LARGHEZZA 16 mm.



esecuzione 2

	DESCRIZ.	ESEC.	N. DENTI	De	Df	Dm	F	L	d	N° FLANGIA
ALLUMINIO	27 AT5 12	1F	12	17,85	23,0	11	21	27	—	1
	27 AT5 14	1F	14	21,05	25,0	13	21	27	—	2
	27 AT5 15	1F	15	22,65	28,0	16	21	27	6	4
	27 AT5 16	1F	16	24,20	32,0	18	21	27	6	5
	27 AT5 18	1F	18	27,40	32,0	20	21	27	6	6
	27 AT5 19	1F	19	29,00	36,0	22	21	27	6	8
	27 AT5 20	1F	20	30,60	36,0	23	21	27	6	8
	27 AT5 22	1F	22	33,85	38,0	24	21	27	6	9
	27 AT5 24	1F	24	37,00	42,0	26	21	27	6	13
	27 AT5 25	1F	25	38,60	44,0	26	21	27	6	12
	27 AT5 26	1F	26	40,20	44,0	26	21	27	6	12
	27 AT5 27	1F	27	41,80	48,0	30	21	27	8	11
	27 AT5 28	1F	28	43,35	48,0	32	21	27	8	11
	27 AT5 30	1F	30	46,55	51,0	34	21	27	8	16
	27 AT5 32	1F	32	49,70	54,0	38	21	27	8	18
	27 AT5 36	1F	36	56,05	64,0	38	21	27	8	23
	27 AT5 40	1F	40	62,45	66,5	40	21	27	8	24
	27 AT5 42	1F	42	65,60	70,0	40	21	27	8	26
	27 AT5 44	2	44	68,80	—	45	21	27	8	—
	27 AT5 48	2	48	75,15	—	50	21	27	8	—
27 AT5 60	2	60	94,25	—	65	21	27	8	—	

## AT 5 (PASSO 5 mm) PER CINGHIA LARGHEZZA 25 mm.

	DESCRIZ.	ESEC.	N. DENTI	De	Df	Dm	F	L	d	N° FLANGIA
ALLUMINIO	36 AT5 12	1F	12	17,85	23,0	11	30	36	—	1
	36 AT5 14	1F	14	21,05	25,0	13	30	36	—	2
	36 AT5 15	1F	15	22,65	28,0	16	30	36	6	4
	36 AT5 16	1F	16	24,20	32,0	18	30	36	6	5
	36 AT5 18	1F	18	27,40	32,0	20	30	36	6	6
	36 AT5 19	1F	19	29,00	36,0	22	30	36	6	8
	36 AT5 20	1F	20	30,60	36,0	23	30	36	6	8
	36 AT5 22	1F	22	33,85	38,0	24	30	36	6	9
	36 AT5 24	1F	24	37,00	42,0	26	30	36	6	13
	36 AT5 25	1F	25	38,60	44,0	26	30	36	6	12
	36 AT5 26	1F	26	40,20	44,0	26	30	36	6	12
	36 AT5 27	1F	27	41,80	48,0	30	30	36	8	11
	36 AT5 28	1F	28	43,35	48,0	32	30	36	8	11
	36 AT5 30	1F	30	46,55	51,0	34	30	36	8	16
	36 AT5 32	1F	32	49,70	54,0	38	30	36	8	18
	36 AT5 36	1F	36	56,05	64,0	38	30	36	8	23
	36 AT5 40	1F	40	62,45	66,5	40	30	36	8	24
	36 AT5 42	1F	42	65,60	70,0	40	30	36	8	26
	36 AT5 44	2	44	68,80	—	45	30	36	8	—
	36 AT5 48	2	48	75,15	—	50	30	36	8	—
36 AT5 60	2	60	94,25	—	65	30	36	8	—	

MATERIALE: ALLUMINIO.

**AT 10** (PASSO 10 mm) PER CINGHIA LARGHEZZA 16 mm.

ALLUMINIO	DESCRIZIONE	ESEC.	N° DENTI	De	Df	Dm	F	L	d	N° FLANGIA
	31 AT10 15	1F	15	45,90	51	32	21	31	8	16
	31 AT10 16	1F	16	49,05	54	35	21	31	8	18
	31 AT10 18	1F	18	55,45	60	40	21	31	8	21
	31 AT10 19	1F	19	58,60	66,5	44	21	31	8	24
	31 AT10 20	1F	20	61,80	66,5	46	21	31	8	24
	31 AT10 22	1F	22	68,15	75	52	21	31	8	27
	31 AT10 24	1F	24	74,55	83	58	21	31	8	29
	31 AT10 25	1F	25	77,70	83	60	21	31	8	29
	31 AT10 26	1F	26	80,90	87	60	21	31	8	31
	31 AT10 27	1F	27	84,10	91	60	21	31	8	32
	31 AT10 28	1F	28	87,25	93	60	21	31	8	33
	31 AT10 30	1F	30	93,65	102	60	21	31	8	35
	31 AT10 32	1F	32	100,00	106	65	21	31	10	38
	31 AT10 36	1F	36	112,75	119	70	21	31	10	43
	31 AT10 40	1F	40	125,45	131	80	21	31	10	47
	31 AT10 44	2	44	138,20	-	88	21	31	10	-
31 AT10 48	2	48	150,95	-	95	21	31	16	-	
31 AT10 60	2	60	189,10	-	110	21	31	16	-	

**AT 10** (PASSO 10 mm) PER CINGHIA LARGHEZZA 25 mm.

ALLUMINIO	DESCRIZIONE	ESEC.	N° DENTI	De	Df	Dm	F	L	d	N° FLANGIA
	40 AT10 15	1F	15	45,90	51	32	30	40	8	16
	40 AT10 16	1F	16	49,05	54	35	30	40	8	18
	40 AT10 18	1F	18	55,45	60	40	30	40	8	21
	40 AT10 19	1F	19	58,60	66,5	44	30	40	8	24
	40 AT10 20	1F	20	61,80	66,5	46	30	40	8	24
	40 AT10 22	1F	22	68,15	75	52	30	40	8	27
	40 AT10 24	1F	24	74,55	83	58	30	40	8	29
	40 AT10 25	1F	25	77,70	83	60	30	40	8	29
	40 AT10 26	1F	26	80,90	87	60	30	40	8	31
	40 AT10 27	1F	27	84,10	91	60	30	40	8	32
	40 AT10 28	1F	28	87,25	93	60	30	40	8	33
	40 AT10 30	1F	30	93,65	102	60	30	40	8	35
	40 AT10 32	1F	32	100,00	106	65	30	40	10	38
	40 AT10 36	1F	36	112,75	119	70	30	40	10	43
	40 AT10 40	1F	40	125,45	131	80	30	40	10	47
	40 AT10 44	2	44	138,20	-	88	30	40	10	-
40 AT10 48	2	48	150,95	-	95	30	40	16	-	
40 AT10 60	2	60	189,10	-	110	30	40	16	-	

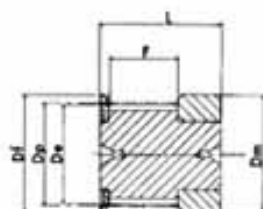
**AT 10** (PASSO 10 mm) PER CINGHIA LARGHEZZA 32 mm.

ALLUMINIO	DESCRIZIONE	ESEC.	N° DENTI	De	Df	Dm	F	L	d	N° FLANGIA
	47 AT10 18	1F	18	55,45	60	40	37	47	10	21
	47 AT10 19	1F	19	58,60	66,5	44	37	47	10	24
	47 AT10 20	1F	20	61,80	66,5	46	37	47	12	24
	47 AT10 22	1F	22	68,15	75	52	37	47	12	27
	47 AT10 24	1F	24	74,55	83	58	37	47	12	29
	47 AT10 25	1F	25	77,70	83	60	37	47	12	29
	47 AT10 26	1F	26	80,90	87	60	37	47	12	31
	47 AT10 27	1F	27	84,10	91	60	37	47	12	32
	47 AT10 28	1F	28	87,25	93	60	37	47	12	33
	47 AT10 30	1F	30	93,65	102	60	37	47	12	35
	47 AT10 32	1F	32	100,00	106	65	37	47	12	38
	47 AT10 36	1F	36	112,75	119	70	37	47	16	43
	47 AT10 40	1F	40	125,45	131	80	37	47	16	47
	47 AT10 44	2	44	138,20	-	88	37	47	16	-
	47 AT10 48	2	48	150,95	-	95	37	47	16	-
	47 AT10 60	2	60	189,10	-	110	37	47	16	-

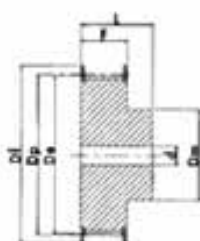
**AT 10** (PASSO 10 mm) PER CINGHIA LARGHEZZA 50 mm.

ALLUMINIO	DESCRIZIONE	ESEC.	N° DENTI	De	Df	Dm	F	L	d	N° FLANGIA
	66 AT10 18	1F	18	55,45	60	40	56	66	10	21
	66 AT10 19	1F	19	58,60	66,5	44	56	66	10	24
	66 AT10 20	1F	20	61,80	66,5	46	56	66	12	24
	66 AT10 22	1F	22	68,15	75	52	56	66	12	27
	66 AT10 24	1F	24	74,55	83	58	56	66	12	29
	66 AT10 25	1F	25	77,70	83	60	56	66	12	29
	66 AT10 26	1F	26	80,90	87	60	56	66	12	31
	66 AT10 27	1F	27	84,10	91	60	56	66	12	32
	66 AT10 28	1F	28	87,25	93	60	56	66	12	33
	66 AT10 30	1F	30	93,65	102	60	56	66	12	35
	66 AT10 32	1F	32	100,00	106	65	56	66	12	38
	66 AT10 36	1F	36	112,75	119	70	56	66	16	43
	66 AT10 40	1F	40	125,45	131	80	56	66	16	47
	66 AT10 44	2	44	138,20	-	88	56	66	16	-
	66 AT10 48	2	48	150,95	-	95	56	66	16	-
	66 AT10 60	2	60	189,10	-	110	56	66	16	-

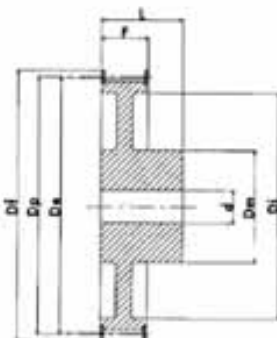
# PULEGGE PER CINGHIE DENTATE HTD® HTD® PULLEYS



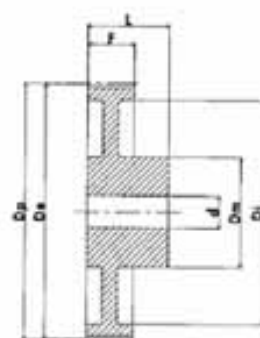
esecuzione 0F



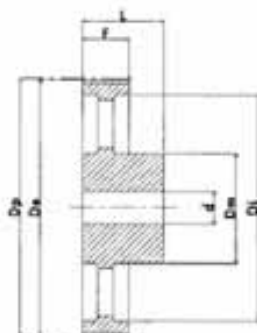
esecuzione 1F



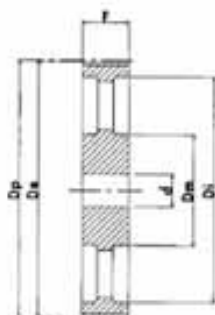
esecuzione 2F



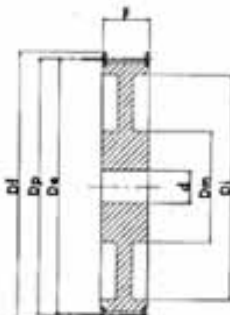
esecuzione 3



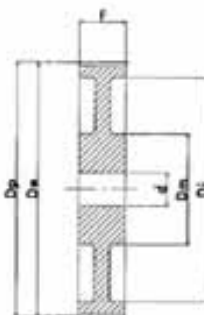
esecuzione 4



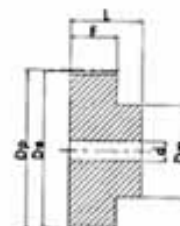
esecuzione 5



esecuzione 6F



esecuzione 7



esecuzione 8

## HTD® 3M-09

CARATTERISTICHE	TIPO	N. DENTI	ESEC.	Dp	De	Df	Dm	F	L	d	N. FLANGIA	
				PERMITTO	ESTERNO	FLANGIA	MOZZO			Ø FORO		
ALLUMINIO	CON FLANGIA	10-3M-09	10	0F	9,55	8,79	13,0	13,0	10,2	17,5	—	501
		12-3M-09	12	0F	11,46	10,70	15,0	15,0	10,2	17,5	—	502
		14-3M-09	14	0F	13,37	12,61	16,0	16,0	10,2	17,5	—	503
		15-3M-09	15	0F	14,32	13,56	17,5	17,5	10,2	17,5	—	516
		16-3M-09	16	1F	15,28	14,52	17,5	10,0	12,8	20,6	4,0	504
		18-3M-09	18	1F	17,19	16,43	20,0	11,0	12,8	20,6	6,0	505
		20-3M-09	20	1F	19,10	18,34	23,0	12,0	12,8	20,6	6,0	517
		21-3M-09	21	1F	20,05	19,29	25,0	13,0	12,8	20,6	6,0	518
		22-3M-09	22	1F	21,01	20,25	25,0	13,0	12,8	20,6	6,0	518
		24-3M-09	24	1F	22,92	22,16	25,0	13,0	12,8	20,6	6,0	518
		26-3M-09	26	1F	24,83	24,07	28,0	16,0	12,8	20,6	6,0	508
		28-3M-09	28	1F	26,74	25,98	32,0	18,0	12,8	20,6	6,0	509
		30-3M-09	30	1F	28,65	27,89	32,0	20,0	12,8	20,6	6,0	509
		32-3M-09	32	1F	30,56	29,80	36,0	22,0	12,8	20,6	6,0	510
	36-3M-09	36	1F	34,38	33,62	39,0	26,0	13,4	22,2	6,0	519	
	40-3M-09	40	1F	38,20	37,44	42,0	28,0	13,4	22,2	6,0	513	
	44-3M-09	44	1F	42,02	41,26	48,0	33,0	13,4	22,2	6,0	520	
	SENZA FLANGIA	48-3M-09	48	8	45,84	45,08	—	33,0	13,4	22,2	8,0	—
		60-3M-09	60	8	57,30	56,54	—	33,0	13,4	22,2	8,0	—
		72-3M-09	72	8	68,75	67,99	—	33,0	13,4	22,2	8,0	—

**PULEGGE**  
**PER CINGHIE DENTATE HTD®**  
**HTD® PULLEYS**

**HTD® 3M-15**

CARATTERISTICHE		TIPO	N. DENTI	ESERC.	Dp PRIMITIVO	De ESTERNO	Df FLANGIA	Dm MOZZO	F	L	d Ø FORO	N. FLANGIA
ALLUMINIO	CON FLANGIA	10-3M-15	10	OF	9,55	8,79	13,0	13,0	17,0	26,0	—	501
		12-3M-15	12	OF	11,46	10,70	15,0	15,0	17,0	26,0	—	502
		14-3M-15	14	OF	13,37	12,61	16,0	16,0	17,0	26,0	—	503
		15-3M-15	15	OF	14,32	13,56	17,5	17,5	17,0	26,0	—	516
		16-3M-15	16	1F	15,28	14,52	17,5	10,0	19,5	26,0	4,0	504
		18-3M-15	18	1F	17,19	16,43	20,0	11,0	19,5	26,0	6,0	505
		20-3M-15	20	1F	19,10	18,34	23,0	12,0	19,5	26,0	6,0	517
		21-3M-15	21	1F	20,05	19,29	25,0	13,0	19,5	26,0	6,0	518
		22-3M-15	22	1F	21,01	20,25	25,0	13,0	19,5	26,0	6,0	518
		24-3M-15	24	1F	22,92	22,16	25,0	13,0	19,5	26,0	6,0	518
		26-3M-15	26	1F	24,83	24,07	28,0	16,0	19,5	26,0	6,0	508
		28-3M-15	28	1F	26,74	25,98	32,0	18,0	19,5	26,0	6,0	509
		30-3M-15	30	1F	28,65	27,89	32,0	20,0	19,5	26,0	6,0	509
		32-3M-15	32	1F	30,56	29,80	36,0	22,0	19,5	26,0	6,0	510
		36-3M-15	36	1F	34,38	33,62	39,0	26,0	20,0	30,0	6,0	519
		40-3M-15	40	1F	38,20	37,44	42,0	28,0	20,0	30,0	6,0	513
	44-3M-15	44	1F	42,02	41,26	48,0	33,0	20,0	30,0	6,0	520	
	SENZA FLANGIA	48-3M-15	48	8	45,84	45,08	—	33,0	20,0	30,0	8,0	—
		60-3M-15	60	8	57,30	56,54	—	33,0	20,0	30,0	8,0	—
		72-3M-15	72	8	68,75	67,99	—	33,0	20,0	30,0	8,0	—

**HTD® 5M-09**

CARATTERISTICHE		TIPO	N. DENTI	ESERC.	Dp PRIMITIVO	De ESTERNO	Df FLANGIA	Dm MOZZO	Di	F	L	d Ø FORO	N. FLANGIA
ACCIAIO	CON FLANGIA	12-5M-09	12	1F	19,10	17,96	23,0	12,0	—	14,5	20,0	4,0	14
		14-5M-09	14	1F	22,28	21,14	25,0	13,0	—	14,5	20,0	6,0	2
		15-5M-09	15	1F	23,87	22,73	28,0	16,0	—	14,5	20,0	6,0	4
		16-5M-09	16	1F	25,46	24,32	28,0	16,5	—	14,5	20,0	6,0	4
		18-5M-09	18	1F	28,65	27,51	32,0	20,0	—	14,5	20,0	6,0	6
		20-5M-09	20	1F	31,83	30,69	36,0	23,0	—	14,5	22,5	6,0	8
		21-5M-09	21	1F	33,42	32,28	38,0	24,0	—	14,5	22,5	6,0	9
		22-5M-09	22	1F	35,01	33,87	39,0	25,5	—	14,5	22,5	6,0	15
		24-5M-09	24	1F	38,20	37,06	42,0	27,0	—	14,5	22,5	6,0	13
		26-5M-09	26	1F	41,38	40,24	44,0	30,0	—	14,5	22,5	6,0	12
		28-5M-09	28	1F	44,56	43,42	48,0	30,5	—	14,5	22,5	6,0	11
		30-5M-09	30	1F	47,75	46,60	51,0	35,0	—	14,5	22,5	6,0	16
		32-5M-09	32	1F	50,93	49,79	54,0	38,0	—	14,5	22,5	8,0	18
		36-5M-09	36	1F	57,30	56,16	60,0	38,0	—	14,5	22,5	8,0	21
		40-5M-09	40	1F	63,66	62,52	71,0	38,0	—	14,5	22,5	8,0	25
		ALLUMINIO	SENZA FLANGIA	44-5M-09	44	3	70,03	68,89	—	38,0	54	14,5	25,5
48-5M-09	48			3	76,39	75,25	—	38,0	61	14,5	25,5	8,0	—
60-5M-09	60			3	95,49	94,35	—	45,0	80	14,5	25,5	8,0	—
72-5M-09	72			3	114,59	113,45	—	45,0	100	14,5	25,5	8,0	—

**PULEGGE**  
**PER CINGHIE DENTATE HTD®**  
**HTD® PULLEYS**

**HTD® 5M-15**

CARATTERISTICHE		TIPO	N. DENTI	ESEC.	Dp PRIMITIVO	De ESTERNO	Df FLANGIA	Dm MOZZO	Di	F	L	d Ø FORO	N. FLANGIA
ACCIAIO	CON FLANGIA	12-5M-15	12	1F	19,10	17,96	23,0	12,0	—	20,5	26,0	—	14
		14-5M-15	14	1F	22,28	21,14	25,0	13,0	—	20,5	26,0	6,0	2
		15-5M-15	15	1F	23,87	22,73	28,0	16,0	—	20,5	26,0	6,0	4
		16-5M-15	16	1F	25,46	24,32	28,0	16,5	—	20,5	26,0	6,0	4
		18-5M-15	18	1F	28,65	27,51	32,0	20,0	—	20,5	26,0	6,0	6
		20-5M-15	20	1F	31,83	30,69	36,0	23,0	—	20,5	26,0	6,0	8
		21-5M-15	21	1F	33,42	32,28	38,0	24,0	—	20,5	26,0	6,0	9
		22-5M-15	22	1F	35,01	33,87	39,0	25,5	—	20,5	26,0	6,0	15
		24-5M-15	24	1F	38,20	37,06	42,0	27,0	—	20,5	28,0	6,0	13
		26-5M-15	26	1F	41,38	40,24	44,0	30,0	—	20,5	28,0	6,0	12
		28-5M-15	28	1F	44,56	43,42	48,0	30,5	—	20,5	28,0	6,0	11
		30-5M-15	30	1F	47,75	46,60	51,0	35,0	—	20,5	28,0	6,0	16
		32-5M-15	32	1F	50,93	49,79	54,0	38,0	—	20,5	28,0	8,0	18
		36-5M-15	36	1F	57,30	56,16	60,0	38,0	—	20,5	28,0	8,0	21
		40-5M-15	40	1F	63,66	62,52	71,0	38,0	—	20,5	28,0	8,0	25
ALLUMINIO	SENZA FLANGIA	44-5M-15	44	3	70,03	68,89	—	38,0	54	20,5	30,0	8,0	—
		48-5M-15	48	3	76,39	75,25	—	38,0	61	20,5	30,0	8,0	—
		60-5M-15	60	3	95,49	94,35	—	50,0	80	20,5	30,0	8,0	—
		72-5M-15	72	3	114,59	113,45	—	50,0	100	20,5	30,0	8,0	—

**HTD® 5M-25**

CARATTERISTICHE		TIPO	N. DENTI	ESEC.	Dp PRIMITIVO	De ESTERNO	Df FLANGIA	Dm MOZZO	Di	F	L	d Ø FORO	N. FLANGIA
ACCIAIO	CON FLANGIA	12-5M-25	12	1F	19,10	17,96	23,0	12,0	—	30,5	36,0	—	14
		14-5M-25	14	1F	22,28	21,14	25,0	13,0	—	30,5	36,0	6,0	2
		15-5M-25	15	1F	23,87	22,73	28,0	16,0	—	30,5	36,0	6,0	4
		16-5M-25	16	1F	25,46	24,32	28,0	16,5	—	30,5	36,0	6,0	4
		18-5M-25	18	1F	28,65	27,51	32,0	20,0	—	30,5	36,0	6,0	6
		20-5M-25	20	1F	31,83	30,69	36,0	23,0	—	30,5	36,0	6,0	8
		21-5M-25	21	1F	33,42	32,28	38,0	24,0	—	30,5	38,0	6,0	9
		22-5M-25	22	1F	35,01	33,87	39,0	25,5	—	30,5	38,0	6,0	15
		24-5M-25	24	1F	38,20	37,06	42,0	27,0	—	30,5	38,0	6,0	13
		26-5M-25	26	1F	41,38	40,24	44,0	30,0	—	30,5	38,0	6,0	12
		28-5M-25	28	1F	44,56	43,42	48,0	30,5	—	30,5	38,0	6,0	11
		30-5M-25	30	1F	47,75	46,60	51,0	35,0	—	30,5	38,0	6,0	16
		32-5M-25	32	1F	50,93	49,79	54,0	38,0	—	30,5	38,0	8,0	18
		36-5M-25	36	1F	57,30	56,16	60,0	38,0	—	30,5	38,0	8,0	21
		40-5M-25	40	1F	63,66	62,52	71,0	38,0	—	30,5	38,0	8,0	25
ALLUMINIO	SENZA FLANGIA	44-5M-25	44	8	70,03	68,89	—	38,0	—	30,5	40,0	8,0	—
		48-5M-25	48	3	76,39	75,25	—	38,0	61	30,5	40,0	8,0	—
		60-5M-25	60	3	95,49	94,35	—	50,0	80	30,5	40,0	8,0	—
		72-5M-25	72	3	114,59	113,45	—	50,0	100	30,5	40,0	8,0	—



**PULEGGE**  
**PER CINGHIE DENTATE HTD®**  
**HTD® PULLEYS**

**HTD® 8M-20**

CARATTERISTICHE		TIPO	N. DENTI	ESEC.	Dp PRIMITIVO	De ESTERNO	Df FLANGIA	Dm MOZZO	Di	F	L	d Ø FORO	N. FLANGIA
ACCIAIO	CON FLANGIA	22-8M-20	22	1F	56,02	54,65	60	43	—	28	38	12	53
		24-8M-20	24	1F	61,12	59,75	66	45	—	28	38	12	69
		26-8M-20	26	1F	66,21	64,85	70	48	—	28	38	12	61
		28-8M-20	28	1F	71,30	70,08	75	50	—	28	38	15	79
		30-8M-20	30	1F	76,39	75,13	82,5	55	—	28	38	15	64
		32-8M-20	32	1F	81,49	80,16	87	60	—	28	38	15	76
		34-8M-20	34	1F	86,58	85,22	91	66	—	28	38	15	66
		36-8M-20	36	1F	91,67	90,30	97	70	—	28	38	15	68
		38-8M-20	38	1F	96,77	95,39	102	75	—	28	38	15	70
		40-8M-20	40	1F	101,86	100,49	106	75	—	28	38	15	77
		44-8M-20	44	1F	112,05	110,67	120	75	—	28	38	15	75
		48-8M-20	48	1F	122,23	120,86	128	75	—	28	38	15	78
		56-8M-20	56	2F	142,60	141,23	150	80	116	28	38	15	85
		64-8M-20	64	2F	162,97	161,60	168	80	137	28	38	15	90
72-8M-20	72	2F	183,35	181,97	192	80	158	28	38	15	97		
GHISA	SENZA FLANGIA	80-8M-20	80	3	203,72	202,35	—	90	180	28	38	15	—
		90-8M-20	90	3	229,18	227,81	—	90	204	28	38	15	—
		•112-8M-20	112	4	285,21	283,83	—	90	254	28	38	18	—
		•144-8M-20	144	4	366,69	365,32	—	90	336	28	38	20	—
		•168-8M-20	168	4	427,81	426,44	—	100	400	28	38	20	—
		•192-8M-20	192	4	488,92	487,55	—	100	460	28	38	20	—

**HTD® 8M-30**

CARATTERISTICHE		TIPO	N. DENTI	ESEC.	Dp PRIMITIVO	De ESTERNO	Df FLANGIA	Dm MOZZO	Di	F	L	d Ø FORO	N. FLANGIA
ACCIAIO	CON FLANGIA	22-8M-30	22	1F	56,02	54,65	60	43	—	38	48	12	53
		24-8M-30	24	1F	61,12	59,75	66	45	—	38	48	12	69
		26-8M-30	26	1F	66,21	64,85	70	48	—	38	48	12	61
		28-8M-30	28	1F	71,30	70,08	75	50	—	38	48	15	79
		30-8M-30	30	1F	76,39	75,13	82,5	55	—	38	48	15	64
		32-8M-30	32	1F	81,49	80,16	87	60	—	38	48	15	76
		34-8M-30	34	1F	86,58	85,22	91	66	—	38	48	15	66
		36-8M-30	36	1F	91,67	90,30	97	70	—	38	48	15	68
		38-8M-30	38	1F	96,77	95,39	102	75	—	38	48	15	70
		40-8M-30	40	1F	101,86	100,49	106	75	—	38	48	15	77
		44-8M-30	44	1F	112,05	110,67	120	75	—	38	48	15	75
		48-8M-30	48	1F	122,23	120,86	128	75	—	38	48	15	78
		56-8M-30	56	2F	142,60	141,23	150	90	116	38	48	15	85
		64-8M-30	64	2F	162,97	161,60	168	90	137	38	48	15	90
72-8M-30	72	2F	183,35	181,97	192	95	158	38	48	15	97		
GHISA	SENZA FLANGIA	80-8M-30	80	3	203,72	202,35	—	100	180	38	48	15	—
		90-8M-30	90	3	229,18	227,81	—	100	204	38	48	15	—
		112-8M-30	112	4	285,21	283,83	—	100	254	38	48	18	—
		144-8M-30	144	4	366,69	365,32	—	100	336	38	48	20	—
		168-8M-30	168	4	427,81	426,44	—	100	400	38	48	20	—
		192-8M-30	192	4	488,92	487,55	—	100	460	38	48	20	—

**PULEGGE**  
**PER CINGHIE DENTATE HTD®**  
**HTD® PULLEYS**

**HTD® 8M-50**

CARATTERISTICHE		TIPO	N. DENTI	ESEC.	Dp PRIMITIVO	De ESTERNO	Df FLANGIA	Dm MOZZO	Di	F	L	d Ø FORO	N. FLANGIA
ACCIAIO	CON FLANGIA	22-8M-50	22	1F	56,02	54,65	60	43	—	60	70	—	53
		24-8M-50	24	1F	61,12	59,75	66	45	—	60	70	—	69
		26-8M-50	26	1F	66,21	64,85	70	48	—	60	70	—	61
		28-8M-50	28	1F	71,30	70,08	75	50	—	60	70	—	79
		30-8M-50	30	1F	76,39	75,13	82,5	55	—	60	70	—	64
		32-8M-50	32	1F	81,49	80,16	87	60	—	60	70	—	76
		34-8M-50	34	1F	86,58	85,22	91	66	—	60	70	—	66
		36-8M-50	36	1F	91,67	90,30	97	70	—	60	70	—	68
		38-8M-50	38	1F	96,77	95,39	102	75	—	60	70	—	70
		40-8M-50	40	1F	101,86	100,49	106	75	—	60	70	—	77
		44-8M-50	44	1F	112,05	110,67	120	75	—	60	70	—	75
		48-8M-50	48	1F	122,23	120,86	128	80	—	60	70	—	78
		56-8M-50	56	6F	142,60	141,23	150	90	116	60	60	18	85
		64-8M-50	64	6F	162,97	161,60	168	100	137	60	60	18	90
72-8M-50	72	6F	183,35	181,97	192	100	158	60	60	18	97		
GHISA	SENZA FLANGIA	80-8M-50	80	7	203,72	202,35	—	110	180	60	60	18	—
		90-8M-50	90	7	229,18	227,81	—	110	204	60	60	18	—
		112-8M-50	112	5	285,21	283,83	—	110	254	60	60	18	—
		144-8M-50	144	5	366,69	365,32	—	110	336	60	60	20	—
		168-8M-50	168	5	427,81	426,44	—	120	400	60	60	20	—
		192-8M-50	192	5	488,92	487,55	—	130	460	60	60	20	—

**HTD® 8M-85**

CARATTERISTICHE		TIPO	N. DENTI	ESEC.	Dp PRIMITIVO	De ESTERNO	Df FLANGIA	Dm MOZZO	Di	F	L	d Ø FORO	N. FLANGIA
ACCIAIO	CON FLANGIA	22-8M-85	22	1F	56,02	54,65	60	43	—	95	105	—	53
		24-8M-85	24	1F	61,12	59,75	66	45	—	95	105	—	69
		26-8M-85	26	1F	66,21	64,85	70	48	—	95	105	—	61
		28-8M-85	28	1F	71,30	70,08	75	50	—	95	105	—	79
		30-8M-85	30	1F	76,39	75,13	82,5	55	—	95	105	—	64
		32-8M-85	32	1F	81,49	80,16	87	60	—	95	105	—	76
		34-8M-85	34	1F	86,58	85,22	91	66	—	95	105	—	66
		36-8M-85	36	1F	91,67	90,30	97	70	—	95	105	—	68
		38-8M-85	38	1F	96,77	95,39	102	75	—	95	105	—	70
		40-8M-85	40	1F	101,86	100,49	106	75	—	95	105	—	77
		44-8M-85	44	1F	112,05	110,67	120	75	—	95	105	—	75
		48-8M-85	48	1F	122,23	120,86	128	80	—	95	105	—	78
		56-8M-85	56	1F	142,60	141,23	150	80	—	95	105	20	85
		64-8M-85	64	6F	162,97	161,60	168	100	137	95	95	20	90
72-8M-85	72	6F	183,35	181,97	192	110	158	95	95	20	97		
GHISA	SENZA FLANGIA	80-8M-85	80	5	203,72	202,35	—	110	180	95	95	20	—
		90-8M-85	90	5	229,18	227,81	—	110	204	95	95	20	—
		112-8M-85	112	5	285,21	283,83	—	110	254	95	95	24	—
		144-8M-85	144	5	366,69	365,32	—	120	336	95	95	24	—
		• 168-8M-85	168	5	427,81	426,44	—	120	400	95	95	24	—
		• 192-8M-85	192	5	488,92	487,55	—	130	460	95	95	24	—

## HTD® 14M-40

CARATTERISTICHE		TIPO	N. DENTI	ESEC.	Dp PRIMITIVO	De ESTERNO	Df FLANGIA	Dm MOZZO	Di	F	L	d Ø FORO	N. FLANGIA
ACCIAIO	CON FLANGIA	28-14M-40	28	<b>1F</b>	124,78	122,12	128	100	—	54	69	24	153
		29-14M-40	29	<b>1F</b>	129,23	126,57	138	100	—	54	69	24	154
		30-14M-40	30	<b>1F</b>	133,69	130,99	138	100	—	54	69	24	154
		32-14M-40	32	<b>1F</b>	142,60	139,88	154	100	—	54	69	24	160
		34-14M-40	34	<b>1F</b>	151,52	148,79	160	100	—	54	69	24	166
		36-14M-40	36	<b>1F</b>	160,43	157,68	168	100	—	54	69	24	168
		38-14M-40	38	<b>1F</b>	169,34	166,60	183	120	—	54	69	24	172
		40-14M-40	40	<b>1F</b>	178,25	175,49	188	120	—	54	69	24	162
		44-14M-40	44	<b>1F</b>	196,08	193,28	211	120	—	54	69	24	175
		48-14M-40	48	<b>2F</b>	213,90	211,11	226	135	170	54	69	24	180
GHISA	SENZA FLANGIA	56-14M-40	56	<b>2F</b>	249,55	246,76	256	135	207	54	69	28	182
		64-14M-40	64	<b>2F</b>	285,21	282,41	296	135	240	54	69	28	184
		72-14M-40	72	<b>4</b>	320,86	318,06	—	135	278	54	69	28	—
		80-14M-40	80	<b>4</b>	356,51	353,71	—	135	314	54	69	28	—
		90-14M-40	90	<b>4</b>	401,07	398,28	—	135	358	54	69	28	—
		112-14M-40	112	<b>4</b>	499,11	496,32	—	135	456	54	69	28	—
		•144-14M-40	144	<b>4</b>	641,71	638,92	—	135	600	54	69	28	—
		•168-14M-40	168	<b>4</b>	748,66	745,87	—	135	706	54	69	28	—
		•192-14M-40	192	<b>4</b>	855,62	852,82	—	135	813	54	69	28	—
		•216-14M-40	216	<b>4</b>	962,57	959,76	—	150	920	54	69	28	—

**PULEGGE**  
**PER CINGHIE DENTATE HTD®**  
**HTD® PULLEYS**

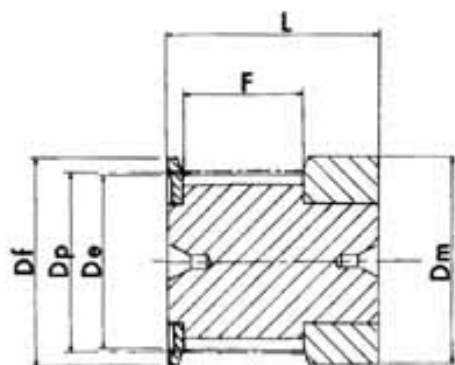
**HTD® 14M-55**

CARATTERISTICHE		TIPO	N. DENTI	ESEC.	Dp PRIMITIVO	De ESTERNO	Df FLANGIA	Dm MOZZO	Di	F	L	d Ø FORO	N. FLANGIA
ACCIAIO	CON FLANGIA	28-14M-55	28	1F	124,78	122,12	128	100	—	70	85	24	153
		•29-14M-55	29	1F	129,23	126,57	138	100	—	70	85	24	154
		30-14M-55	30	1F	133,69	130,99	138	100	—	70	85	24	154
		32-14M-55	32	1F	142,60	139,88	154	100	—	70	85	24	160
		34-14M-55	34	1F	151,52	148,79	160	100	—	70	85	24	166
		36-14M-55	36	1F	160,43	157,68	168	100	—	70	85	24	168
		38-14M-55	38	1F	169,34	166,60	183	120	—	70	85	24	172
		40-14M-55	40	1F	178,25	175,49	188	120	—	70	85	24	162
		44-14M-55	44	1F	196,08	193,28	211	120	—	70	85	24	175
		48-14M-55	48	6F	213,90	211,11	226	135	170	70	70	24	180
GHISA	SENZA FLANGIA	56-14M-55	56	6F	249,55	246,76	256	135	207	70	70	28	182
		64-14M-55	64	6F	285,21	282,41	296	135	240	70	70	28	184
		72-14M-55	72	5	320,86	318,06	—	135	278	70	70	28	—
		80-14M-55	80	5	356,51	353,71	—	135	314	70	70	28	—
		90-14M-55	90	5	401,07	398,28	—	135	358	70	70	28	—
		112-14M-55	112	5	499,11	496,32	—	135	456	70	70	28	—
		144-14M-55	144	5	641,71	638,92	—	135	600	70	70	28	—
		168-14M-55	168	5	748,66	745,87	—	135	706	70	70	28	—
		192-14M-55	192	5	855,62	852,82	—	135	813	70	70	28	—
		•216-14M-55	216	5	962,57	959,76	—	150	920	70	70	28	—

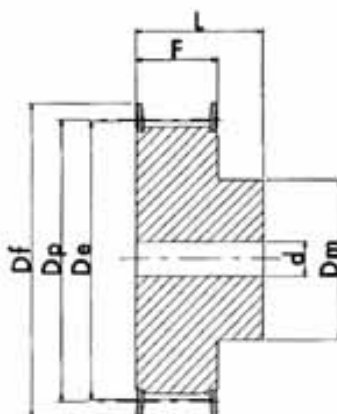
**HTD® 14M-85**

CARATTERISTICHE		TIPO	N. DENTI	ESEC.	Dp PRIMITIVO	De ESTERNO	Df FLANGIA	Dm MOZZO	Di	F	L	d Ø FORO	N. FLANGIA
ACCIAIO	CON FLANGIA	28-14M-85	28	1F	124,78	122,12	128	100	—	102	117	—	153
		•29-14M-85	29	1F	129,23	126,57	138	100	—	102	117	—	154
		30-14M-85	30	1F	133,69	130,99	138	100	—	102	117	—	154
		32-14M-85	32	1F	142,60	139,88	154	100	—	102	117	—	160
		34-14M-85	34	1F	151,52	148,79	160	100	—	102	117	—	166
		36-14M-85	36	1F	160,43	157,68	168	100	—	102	117	—	168
		38-14M-85	38	1F	169,34	166,60	183	120	—	102	117	—	172
		40-14M-85	40	1F	178,25	175,49	188	135	—	102	117	—	162
		44-14M-85	44	1F	196,08	193,28	211	135	—	102	117	—	175
		48-14M-85	48	1F	213,90	211,11	226	150	—	102	117	—	180
GHISA	SENZA FLANGIA	56-14M-85	56	6F	249,55	246,76	256	150	207	102	102	32	182
		64-14M-85	64	6F	285,21	282,41	296	150	240	102	102	32	184
		72-14M-85	72	5	320,86	318,06	—	150	278	102	102	32	—
		80-14M-85	80	5	356,51	353,71	—	150	314	102	102	32	—
		90-14M-85	90	5	401,07	398,28	—	150	358	102	102	32	—
		112-14M-85	112	5	499,11	496,32	—	150	456	102	102	32	—
		144-14M-85	144	5	641,71	638,92	—	150	600	102	102	32	—
		168-14M-85	168	5	748,66	745,87	—	150	706	102	102	32	—
		192-14M-85	192	5	855,62	852,82	—	165	813	102	102	32	—
		•216-14M-85	216	5	962,57	959,76	—	165	920	102	102	32	—

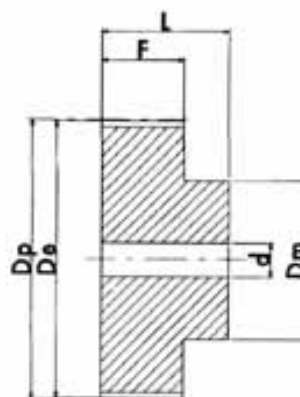
## PULEGGE DENTATE **PASSO METRICO "T"** METRIC PULLEYS



**esecuzione 0F**



**esecuzione 1F**



**esecuzione 2**

**T 2,5** (PASSO 2,5 mm) PER CINGHIA LARGHEZZA 6 mm.

	DESCRIZ.	ESEC.	N° DENTI	Dp	De	Df	Dm	F	L	d	N° FLANGIA
	ALLUMINIO	16 T2,5 12	0F	12	9,60	9,00	13,0	13	9	16	—
16 T2,5 14		0F	14	11,20	10,60	15,0	15	9	16	—	502
16 T2,5 15		0F	15	12,00	11,40	15,0	15	9	16	—	502
16 T2,5 16		0F	16	12,80	12,20	16,0	16	9	16	—	503
16 T2,5 18		1F	18	14,40	13,80	17,5	10	10	16	—	504
16 T2,5 19		1F	19	15,20	14,60	20,0	10	10	16	—	505
16 T2,5 20		1F	20	16,00	15,40	20,0	11	10	16	—	505
16 T2,5 22		1F	22	17,60	17,00	22,0	11	10	16	—	512
16 T2,5 24		1F	24	19,15	18,55	22,0	12	10	16	4	512
16 T2,5 25		1F	25	19,95	19,35	25,0	13	10	16	4	506
16 T2,5 26		1F	26	20,75	20,15	26,0	14	10	16	4	507
16 T2,5 28		1F	28	22,35	21,75	26,0	14	10	16	4	507
16 T2,5 30		1F	30	23,95	23,35	26,0	16	10	16	6	508
16 T2,5 32		1F	32	25,55	24,95	32,0	16	10	16	6	509
16 T2,5 36		1F	36	28,75	28,10	36,0	20	10	16	6	510
16 T2,5 40		1F	40	31,90	31,30	38,0	22	10	16	6	511
16 T2,5 44		2	44	35,10	34,50	—	24	10	16	6	—
16 T2,5 48		2	48	38,30	37,70	—	26	10	16	6	—
16 T2,5 60		2	60	47,85	47,25	—	34	10	16	8	—

# PULEGGE DENTATE PASSO METRICO "T" METRIC PULLEYS

## T 5 (PASSO 5 mm) PER CINGHIA LARGHEZZA 10 mm.

ALLUMINIO	DESCRIZ.	ESEC.	N° DENTI	Dp	De	Df	Dm	F	L	d	N° FLANGIA
	21 T5 10	1F	10	16,05	15,05	19,5	8	15	21	—	—
21 T5 12	1F	12	19,25	18,25	23,0	11	15	21	—	—	1
21 T5 14	1F	14	22,45	21,45	25,0	13	15	21	—	—	2
21 T5 15	1F	15	24,05	23,05	28,0	16	15	21	6	6	4
21 T5 16	1F	16	25,06	24,60	32,0	18	15	21	6	6	5
21 T5 18	1F	18	28,80	27,80	32,0	20	15	21	6	6	6
21 T5 19	1F	19	30,40	29,40	36,0	22	15	21	6	6	8
21 T5 20	1F	20	32,00	31,00	36,0	23	15	21	6	6	8
21 T5 22	1F	22	35,15	34,15	38,0	24	15	21	6	6	9
21 T5 24	1F	24	38,40	37,40	42,0	26	15	21	6	6	13
21 T5 25	1F	25	39,95	38,95	44,0	26	15	21	6	6	12
21 T5 26	1F	26	41,60	40,60	44,0	26	15	21	6	6	12
21 T5 27	1F	27	43,20	42,20	48,0	30	15	21	8	8	11
21 T5 28	1F	28	44,75	43,75	48,0	32	15	21	8	8	11
21 T5 30	1F	30	47,95	46,95	51,0	34	15	21	8	8	16
21 T5 32	1F	32	51,10	50,10	54,0	38	15	21	8	8	18
21 T5 36	1F	36	57,45	56,45	64,0	38	15	21	8	8	23
21 T5 40	1F	40	63,85	62,85	66,5	40	15	21	8	8	24
21 T5 42	1F	42	67,00	66,00	70,0	40	15	21	8	8	26
21 T5 44	2	44	70,20	69,20	—	45	15	21	8	8	—
21 T5 48	2	48	76,55	75,55	—	50	15	21	8	8	—
21 T5 60	2	60	95,65	94,65	—	65	15	21	8	8	—

## T 5 (PASSO 5 mm) PER CINGHIA LARGHEZZA 16 mm.

ALLUMINIO	DESCRIZ.	ESEC.	N° DENTI	Dp	De	Df	Dm	F	L	d	N° FLANGIA
	27 T5 10	1F	10	16,05	15,05	19,5	8	21	27	—	—
27 T5 12	1F	12	19,25	18,25	23,0	11	21	27	—	—	1
27 T5 14	1F	14	22,45	21,45	25,0	13	21	27	—	—	2
27 T5 15	1F	15	24,05	23,05	28,0	16	21	27	6	6	4
27 T5 16	1F	16	25,06	24,60	32,0	18	21	27	6	6	5
27 T5 18	1F	18	28,80	27,80	32,0	20	21	27	6	6	6
27 T5 19	1F	19	30,40	29,40	36,0	22	21	27	6	6	8
27 T5 20	1F	20	32,00	31,00	36,0	23	21	27	6	6	8
27 T5 22	1F	22	35,15	34,15	38,0	24	21	27	6	6	9
27 T5 24	1F	24	38,40	37,40	42,0	26	21	27	6	6	13
27 T5 25	1F	25	39,95	38,95	44,0	26	21	27	6	6	12
27 T5 26	1F	26	41,60	40,60	44,0	26	21	27	6	6	12
27 T5 27	1F	27	43,20	42,20	48,0	30	21	27	8	8	11
27 T5 28	1F	28	44,75	43,75	48,0	32	21	27	8	8	11
27 T5 30	1F	30	47,95	46,95	51,0	34	21	27	8	8	16
27 T5 32	1F	32	51,10	50,10	54,0	38	21	27	8	8	18
27 T5 36	1F	36	57,45	56,45	64,0	38	21	27	8	8	23
27 T5 40	1F	40	63,85	62,85	66,5	40	21	27	8	8	24
27 T5 42	1F	42	67,00	66,00	70,0	40	21	27	8	8	26
27 T5 44	2	44	70,20	69,20	—	45	21	27	8	8	—
27 T5 48	2	48	76,55	75,55	—	50	21	27	8	8	—
27 T5 60	2	60	95,65	94,65	—	65	21	27	8	8	—

## T 5 (PASSO 5 mm) PER CINGHIA LARGHEZZA 25 mm.

ALLUMINIO	DESCRIZ.	ESEC.	N° DENTI	Dp	De	Df	Dm	F	L	d	N° FLANGIA
	36 T5 10	1F	10	16,05	15,05	19,5	8	30	36	—	—
36 T5 12	1F	12	19,25	18,25	23,0	11	30	36	—	—	1
36 T5 14	1F	14	22,45	21,45	25,0	13	30	36	—	—	2
36 T5 15	1F	15	24,05	23,05	28,0	16	30	36	6	6	4
36 T5 16	1F	16	25,06	24,60	32,0	18	30	36	6	6	5
36 T5 18	1F	18	28,80	27,80	32,0	20	30	36	6	6	6
36 T5 19	1F	19	30,40	29,40	36,0	22	30	36	6	6	8
36 T5 20	1F	20	32,00	31,00	36,0	23	30	36	6	6	8
36 T5 22	1F	22	35,15	34,15	38,0	24	30	36	6	6	9
36 T5 24	1F	24	38,40	37,40	42,0	26	30	36	8	8	13
36 T5 25	1F	25	39,95	38,95	44,0	26	30	36	8	8	12
36 T5 26	1F	26	41,60	40,60	44,0	26	30	36	8	8	12
36 T5 27	1F	27	43,20	42,20	48,0	30	30	36	8	8	11
36 T5 28	1F	28	44,75	43,75	48,0	32	30	36	8	8	11
36 T5 30	1F	30	47,95	46,95	51,0	34	30	36	8	8	16
36 T5 32	1F	32	51,10	50,10	54,0	38	30	36	8	8	18
36 T5 36	1F	36	57,45	56,45	64,0	38	30	36	8	8	23
36 T5 40	1F	40	63,85	62,85	66,5	40	30	36	8	8	24
36 T5 42	1F	42	67,00	66,00	70,0	40	30	36	8	8	26
36 T5 44	2	44	70,20	69,20	—	45	30	36	8	8	—
36 T5 48	2	48	76,55	75,55	—	50	30	36	8	8	—
36 T5 60	2	60	95,65	94,65	—	65	30	36	8	8	—

# PULEGGE DENTATE PASSO METRICO "T" METRIC PULLEYS

## T 10 (PASSO 10 mm) PER CINGHIA LARGHEZZA 16 mm.

ALLUMINIO	DESCRIZIONE	ESEC.	N° DENTI	Dp	De	Df	Dm	F	L	d	N° FLANGIA
	31 T10 12	1F	12	38,35	36,35	42	28	21	31	6	13
	31 T10 14	1F	14	44,70	42,70	48	32	21	31	8	11
	31 T10 15	1F	15	47,90	45,90	51	32	21	31	8	16
	31 T10 16	1F	16	51,10	49,10	54	35	21	31	8	18
	31 T10 18	1F	18	57,45	55,45	60	40	21	31	8	21
	31 T10 19	1F	19	60,65	58,65	66	44	21	31	8	24
	31 T10 20	1F	20	63,80	61,80	66	46	21	31	8	24
	31 T10 22	1F	22	70,20	68,20	75	52	21	31	8	27
	31 T10 24	1F	24	76,55	74,55	83	58	21	31	8	29
	31 T10 25	1F	25	79,75	77,75	83	60	21	31	8	29
	31 T10 26	1F	26	82,90	80,90	87	60	21	31	8	31
31 T10 27	1F	27	86,10	84,10	91	60	21	31	8	32	
31 T10 28	1F	28	89,25	87,25	93	60	21	31	8	33	
31 T10 30	1F	30	95,65	93,65	102	60	21	31	8	35	
31 T10 32	1F	32	102,00	100,00	106	65	21	31	10	38	
31 T10 36	1F	36	114,75	112,75	119	70	21	31	10	43	
31 T10 40	1F	40	127,45	125,45	131	80	21	31	10	47	
31 T10 44	2	44	140,20	138,20	-	88	21	31	10	-	
31 T10 48	2	48	152,95	150,95	-	95	21	31	16	-	
31 T10 60	2	60	191,15	189,10	-	110	21	31	16	-	

## T 10 (PASSO 10 mm) PER CINGHIA LARGHEZZA 25 mm.

ALLUMINIO	DESCRIZIONE	ESEC.	N° DENTI	Dp	De	Df	Dm	F	L	d	N° FLANGIA
	40 T10 12	1F	12	38,35	36,35	42	28	30	40	6	13
	40 T10 14	1F	14	44,70	42,70	48	32	30	40	8	11
	40 T10 15	1F	15	47,90	45,90	51	32	30	40	8	16
	40 T10 16	1F	16	51,10	49,10	54	35	30	40	8	18
	40 T10 18	1F	18	57,45	55,45	60	40	30	40	8	21
	40 T10 19	1F	19	60,65	58,65	66	44	30	40	8	24
	40 T10 20	1F	20	63,80	61,80	66	46	30	40	8	24
	40 T10 22	1F	22	70,20	68,20	75	52	30	40	8	27
	40 T10 24	1F	24	76,55	74,55	83	58	30	40	8	29
	40 T10 25	1F	25	79,75	77,75	83	60	30	40	8	29
	40 T10 26	1F	26	82,90	80,90	87	60	30	40	8	31
40 T10 27	1F	27	86,10	84,10	91	60	30	40	8	32	
40 T10 28	1F	28	89,25	87,25	93	60	30	40	8	33	
40 T10 30	1F	30	95,65	93,65	102	60	30	40	8	35	
40 T10 32	1F	32	102,00	100,00	106	65	30	40	10	38	
40 T10 36	1F	36	114,75	112,75	119	70	30	40	10	43	
40 T10 40	1F	40	127,45	125,45	131	80	30	40	10	47	
40 T10 44	2	44	140,20	138,20	-	88	30	40	10	-	
40 T10 48	2	48	152,95	150,95	-	95	30	40	16	-	
40 T10 60	2	60	191,15	189,15	-	110	30	40	16	-	

# PULEGGE DENTATE PASSO METRICO "T" METRIC PULLEYS

## T 10 (PASSO 10 mm) PER CINGHIA LARGHEZZA 32 mm.

ALLUMINIO	DESCRIZIONE	ESEC.	N° DENTI	Dp	De	Df	Dm	F	L	d	N° FLANGIA
	47 T10 18	1F	18	57,45	55,45	60	40	37	47	10	21
	47 T10 19	1F	19	60,65	58,60	66	44	37	47	10	24
	47 T10 20	1F	20	63,80	61,80	66	46	37	47	12	24
	47 T10 22	1F	22	70,20	68,20	75	52	37	47	12	27
	47 T10 24	1F	24	76,55	74,55	83	58	37	47	12	29
	47 T10 25	1F	25	79,75	77,75	83	60	37	47	12	29
	47 T10 26	1F	26	82,90	80,90	87	60	37	47	12	31
	47 T10 27	1F	27	86,10	84,10	91	60	37	47	12	32
	47 T10 28	1F	28	89,25	87,25	93	60	37	47	12	33
	47 T10 30	1F	30	95,65	93,65	102	60	37	47	12	35
	47 T10 32	1F	32	102,00	100,00	106	65	37	47	12	38
	47 T10 36	1F	36	114,75	112,75	119	70	37	47	16	43
	47 T10 40	1F	40	127,45	125,45	131	80	37	47	16	47
	47 T10 44	2	44	140,20	138,20	-	88	37	47	16	-
	47 T10 48	2	48	152,95	150,95	-	95	37	47	16	-
47 T10 60	2	60	191,10	189,10	-	110	37	47	16	-	

## T 10 (PASSO 10 mm) PER CINGHIA LARGHEZZA 50 mm.

ALLUMINIO	DESCRIZIONE	ESEC.	N° DENTI	Dp	De	Df	Dm	F	L	d	N° FLANGIA
	66 T10 18	1F	18	57,45	55,45	60	40	56	66	10	21
	66 T10 19	1F	19	60,65	58,65	66	44	56	66	10	24
	66 T10 20	1F	20	63,80	61,80	66	46	56	66	12	24
	66 T10 22	1F	22	70,20	68,20	75	52	56	66	12	27
	66 T10 24	1F	24	76,55	74,55	83	58	56	66	12	29
	66 T10 25	1F	25	79,75	77,70	83	60	56	66	12	29
	66 T10 26	1F	26	82,90	80,90	87	60	56	66	12	31
	66 T10 27	1F	27	86,10	84,10	91	60	56	66	12	32
	66 T10 28	1F	28	89,25	87,25	93	60	56	66	12	33
	66 T10 30	1F	30	95,65	93,65	102	60	56	66	12	35
	66 T10 32	1F	32	102,00	100,00	106	65	56	66	12	38
	66 T10 36	1F	36	114,75	112,75	119	70	56	66	16	43
	66 T10 40	1F	40	127,45	125,45	131	80	56	66	16	47
	66 T10 44	2	44	140,20	138,20	-	88	56	66	16	-
	66 T10 48	2	48	152,95	150,95	-	95	56	66	16	-
66 T10 60	2	60	191,10	189,10	-	110	56	66	16	-	



# PULEGGE REGO- LABILI "PR DV"

(mozzo pieno)

# ADJUSTABLE PULLEYS "PR DV"

(solid)

# POULIES RÉGLABLES "PR DV"

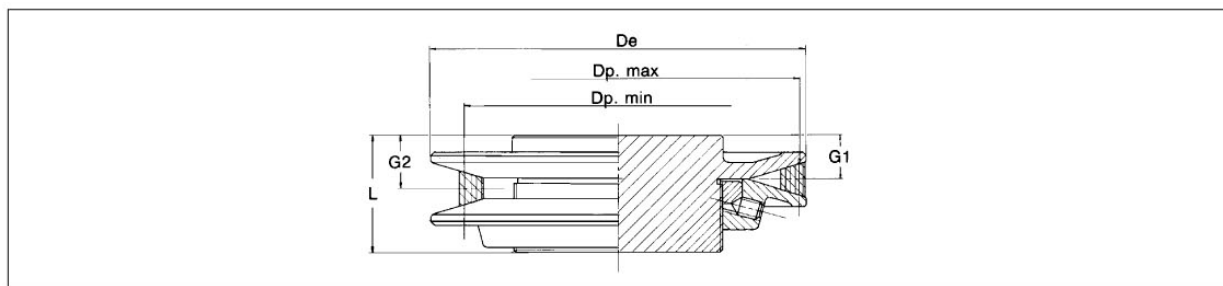
(pleine)

# "PR DV" VERSTELLSCHIBEN

(Vollscheibe)

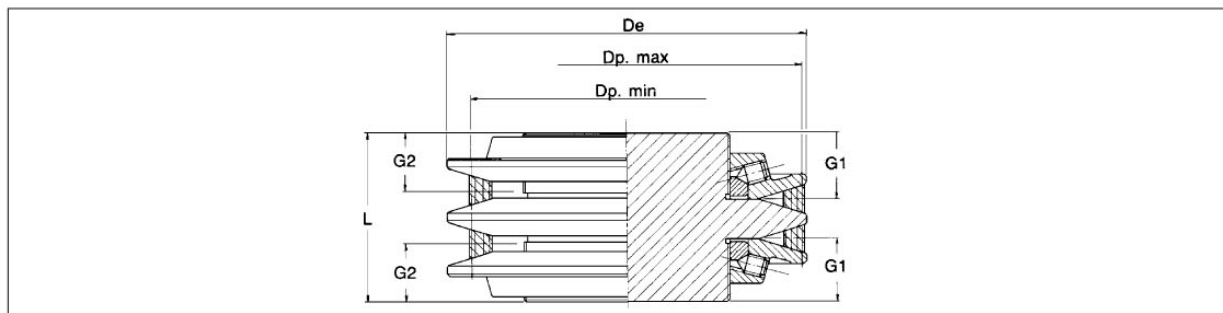
## PR1DV

CODICE CODE CODE BESTELLNUMMER	De [mm]	L [mm]	Cinghia SPZ / SPZ belt / Courroie SPZ / SPZ-Riemen					Cinghia SPA / SPA belt / Courroie SPA / SPA-Riemen					Cinghia SPB / SPB belt / Courroie SPB / SPB-Riemen				
			Dp max [mm]	Dp min [mm]	Campo di variazione Variation range Champ de variation Verstellbereich	G1 [mm]	G2 [mm]	Dp max [mm]	Dp min [mm]	Campo di variazione Variation range Champ de variation Verstellbereich	G1 [mm]	G2 [mm]	Dp max [mm]	Dp min [mm]	Campo di variazione Variation range Champ de variation Verstellbereich	G1 [mm]	G2 [mm]
PR1DV 59	59	36	54	38	1,42	11	13,4	53,4	40	1,34	12,5	14,5	—	—	—	—	—
PR1DV 73	73	40	68	52	1,31	14	16,4	67,4	54	1,25	15,5	17,5	66	60	1,10	16,8	17,7
PR1DV 83	83	46,5	71,5	56	1,27	16,5	18,9	77,4	58	1,33	17	20	76	64	1,19	18,3	20,2
PR1DV 95	95	46,5	83,5	68	1,23	16,5	18,9	89,4	70	1,28	17	20	88	76	1,16	18,3	20,2
PR1DV 105	105	47	90	74,5	1,21	17	19,4	99,4	77	1,29	17	20,5	98	82,5	1,19	18,3	20,7
PR1DV 121	121	48	106	90,5	1,17	17	19,4	115,4	93	1,24	17	20,5	114	98,5	1,16	18,3	20,7
PR1DV 136	136	48	121	105,5	1,15	17	19,4	130,4	108	1,21	17	20,5	129	113,5	1,14	18,3	20,7
PR1DV 152	152	48	137	121,5	1,13	17	19,4	146,4	124	1,18	17	20,5	145	129,5	1,12	18,3	20,7
PR1DV 167	167	48	152	136,5	1,11	17	19,4	161,4	139	1,16	17	20,5	160	144,5	1,11	18,3	20,7
PR1DV 232	232	59,5	206,5	184,5	1,12	25	27,1	220	197	1,12	25	28	221	202,5	1,09	25	28,2



## PR2DV

CODICE CODE CODE BESTELLNUMMER	De [mm]	L [mm]	Cinghia SPZ / SPZ belt / Courroie SPZ / SPZ-Riemen					Cinghia SPA / SPA belt / Courroie SPA / SPA-Riemen					Cinghia SPB / SPB belt / Courroie SPB / SPB-Riemen				
			Dp max [mm]	Dp min [mm]	Campo di variazione Variation range Champ de variation Verstellbereich	G1 [mm]	G2 [mm]	Dp max [mm]	Dp min [mm]	Campo di variazione Variation range Champ de variation Verstellbereich	G1 [mm]	G2 [mm]	Dp max [mm]	Dp min [mm]	Campo di variazione Variation range Champ de variation Verstellbereich	G1 [mm]	G2 [mm]
PR2DV 105	105	76	90	74,5	1,21	30	27,6	99,4	77	1,29	30	26,5	98	82,5	1,19	30	27,6
PR2DV 121	121	76	106	90,5	1,17	30	27,6	115,4	93	1,24	30	26,5	114	98,5	1,16	30	27,6
PR2DV 136	136	76	121	105,5	1,15	30	27,6	130,4	108	1,21	30	26,5	129	113,5	1,14	30	27,6
PR2DV 152	152	76	137	121,5	1,13	30	27,6	146,4	124	1,18	30	26,5	145	129,5	1,12	30	27,6
PR2DV 167	167	76	152	136,5	1,11	30	27,6	161,4	139	1,16	30	26,5	160	144,5	1,11	30	27,6
PR2DV 232	232	90	206,5	184,5	1,12	34,5	32,4	220	197	1,12	34,5	31,5	221	202,5	1,09	34,5	31,3



# PULEGGE REGO- LABILI "PBR DV"

(mozzo predisposto per bussola conica  
SER-SIT®)

# ADJUSTABLE PULLEYS "PBR DV"

(for assembly with SER-SIT® taper bush)

# POULIES RÉGLA- BLES "PBR DV"

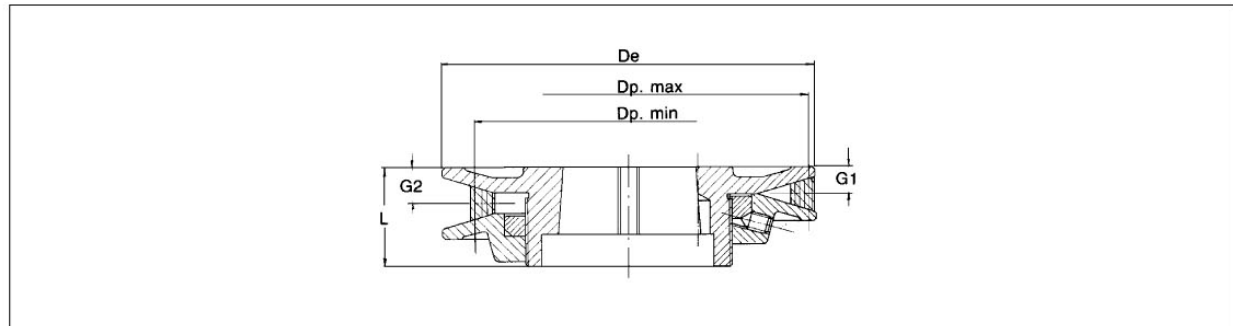
(pour montage avec moyeu amovible  
SER-SIT®)

# "PBR DV" VERSTELLSCHIBEN

(mit Nabe für Einbau der SER-SIT® -  
Taperbuchse)

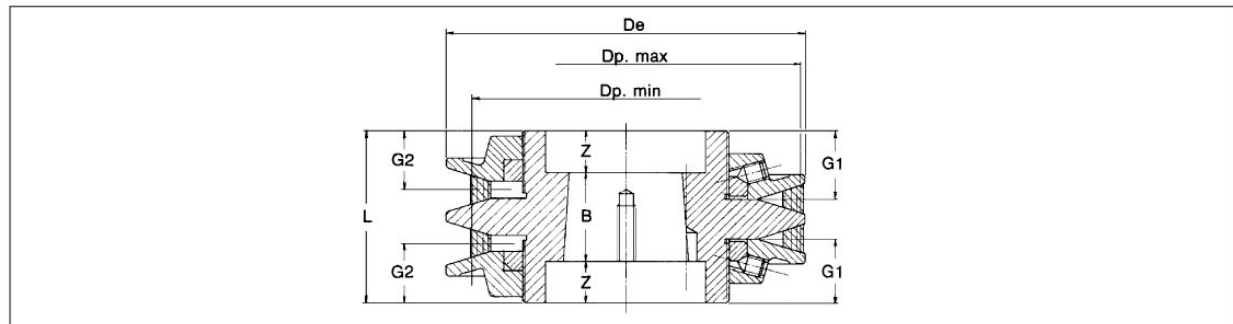
## PBR1DV

CODICE CODE CODE BESTELLNUMMER	De [mm]	L [mm]	Bussole coniche SER-SIT® SER-SIT® Taper bush moyeu amovible SER-SIT® SER-SIT® Taper buchse	Cinghia SPZ / SPZ belt / Courroie SPZ / SPZ-Riemen				Cinghia SPA / SPA belt / Courroie SPA / SPA-Riemen				Cinghia SPB / SPB belt / Courroie SPB / SPB-Riemen						
				Dp max [mm]	Dp min [mm]	Campo di variazione Variation range Champ de variation Verstell- bereich	G1 [mm]	G2 [mm]	Dp max [mm]	Dp min [mm]	Campo di variazione Variation range Champ de variation Verstell- bereich	G1 [mm]	G2 [mm]	Dp max [mm]	Dp min [mm]	Campo di variazione Variation range Champ de variation Verstell- bereich	G1 [mm]	G2 [mm]
PBR1DV 95	95	39,5	1008 (25.20)	83,5	68	1,23	9,5	11,9	89,4	70	1,28	10	13	88	76	1,16	11,3	13,2
PBR1DV 105	105	40	1108 (28.20)	90	74,5	1,21	10	12,4	99,4	77	1,29	10	13,5	98	82,5	1,19	11,3	13,7
PBR1DV 121	121	41	1108 (28.20)	106	90,5	1,17	10	12,4	115,4	93	1,24	10	13,5	114	98,5	1,16	11,3	13,7
PBR1DV 136	136	41	1210 (30.25)	121	105,5	1,15	10	12,4	130,4	108	1,21	10	13,5	129	113,5	1,14	11,3	13,7
PBR1DV 152	152	41	1610 (40.25)	137	121,5	1,13	10	12,4	146,4	124	1,18	10	13,5	145	129,5	1,12	11,3	13,7
PBR1DV 167	167	41	1610 (40.25)	152	136,5	1,11	10	12,4	161,4	139	1,16	10	13,5	160	144,5	1,11	11,3	13,7
PBR1DV 232	232	47,5	2012 (50.30)	206,5	184,5	1,12	13	15,1	220	197	1,12	13	16	221	202,5	1,09	13	16,2



## PBR2DV

CODICE CODE CODE BESTELLNUMMER	De [mm]	L [mm]	Z	B	Bussole coniche SER-SIT® SER-SIT® Taper bush moyeu amovible SER-SIT® SER-SIT® Taper buchse	Cinghia SPZ / SPZ belt / Courroie SPZ / SPZ-Riemen				Cinghia SPA / SPA belt / Courroie SPA / SPA-Riemen				Cinghia SPB / SPB belt / Courroie SPB / SPB-Riemen						
						Dp max [mm]	Dp min [mm]	Campo di variazione Variation range Champ de variation Verstell- bereich	G1 [mm]	G2 [mm]	Dp max [mm]	Dp min [mm]	Campo di variazione Variation range Champ de variation Verstell- bereich	G1 [mm]	G2 [mm]	Dp max [mm]	Dp min [mm]	Campo di variazione Variation range Champ de variation Verstell- bereich	G1 [mm]	G2 [mm]
PBR2DV 105	105	76	27	22	1108 (28.20)	90	74,5	1,21	30	27,6	99,4	77	1,29	30	26,5	98	82,5	1,19	30	27,6
PBR2DV 121	121	76	17	42	1215 (30.40)	106	90,5	1,17	30	27,6	115,4	93	1,24	30	26,5	114	98,5	1,16	30	27,6
PBR2DV 136	136	76	17	42	1215 (30.40)	121	105,5	1,15	30	27,6	130,4	108	1,21	30	26,5	129	113,5	1,14	30	27,6
PBR2DV 152	152	76	17	42	1615 (40.40)	137	121,5	1,13	30	27,6	146,4	124	1,18	30	26,5	145	129,5	1,12	30	27,6
PBR2DV 167	167	76	17	42	1615 (40.40)	152	136,5	1,11	30	27,6	161,4	139	1,16	30	26,5	160	144,5	1,11	30	27,6
PBR2DV 232	232	90	21,5	47	2517 (65.45)	206,5	184,5	1,12	34,5	32,4	220	197	1,12	34,5	31,5	221	202,5	1,09	34,5	31,3

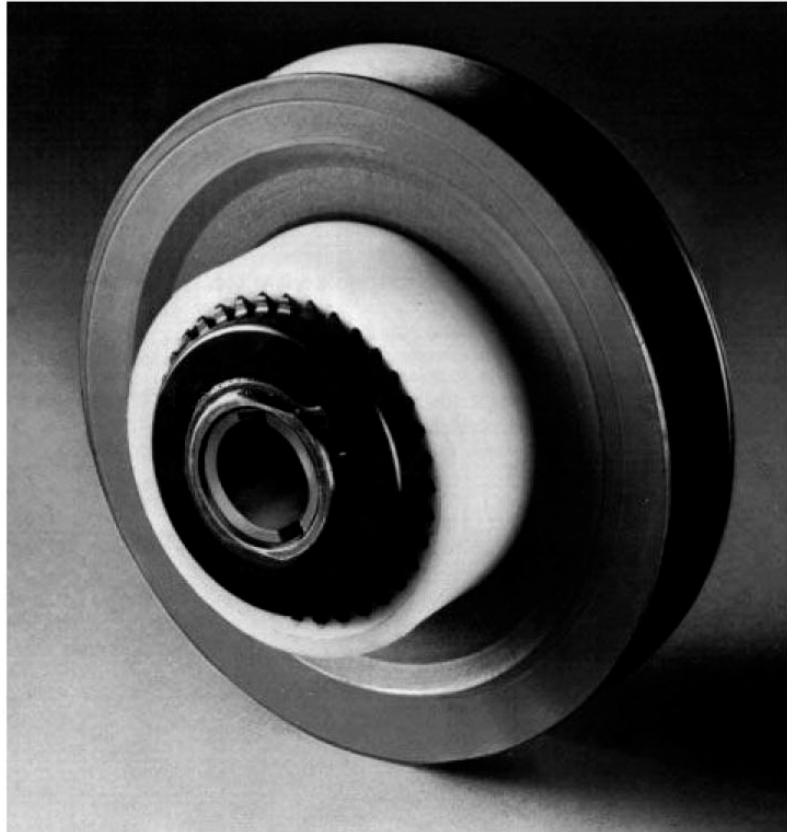
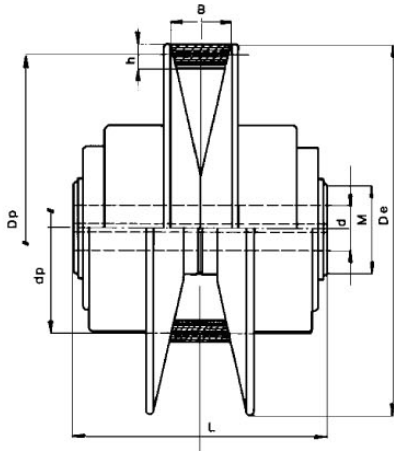


**DIMENSIONI E PRESTAZIONI**

**DIMENSIONS AND PERFORMANCES**

**DIMENSIONS ET PERFORMANCES**

**ABMESSUNGEN UND LEISTUNGSVERMÖGEN**



TIPO TYPE TYPE TYP	Potenza Power Puissance Leistung [kW]				Cinghia Belt Courroie Riemen  B x h [mm]	De [mm]	L [mm]	dw max Dp [mm]	min dp [mm]	Mozzo e fori Hub and bores Moyeu et trous Naben und Bohrungen		Campo di variazione Variation range Champ de variation Verstellbereich  1:	Peso Weight Poids Gewicht  [kg]	
	750 [rpm]	1000 [rpm]	1500 [rpm]	3000 [rpm]						M (1) [mm]	d (2) [mm]			Fori finiti Finished bores Primitif trous Fertige Bohrungen (3) [mm]
<b>VAR 100</b>	0,25	0,33	0,5	1	13 x 6	100	65	97	37	23	10	11-12-14-16	2,61	0,900
<b>VAR 130</b>	0,37	0,5	0,75	1,5	22 x 8	130	88	126	46	27	10	14-18-19	2,73	1,690
<b>VAR 160</b>	0,75	1	1,5	3	28 x10	160	115	155	60	34	10	18-19-22-24	2,58	3,250
<b>VAR 190</b>	1,75	2,3	3,5	7	36 x12	190	131	184	65	39	10	19-22-24-25-28	2,83	4,850
<b>VAR 240</b>	2,75	3,65	5,5	—	46 x 13	240	170	233	72	43	10	24-25-28-32	3,22	8,600
<b>VAR 300</b>	5	6,6	10	—	54 x 16	300	200	292	91	54	10	32-38-42	3,21	15,000

(1) Diametro mozzo in acciaio

(1) Steel hub diameter

(1) Diamètre moyeu acier

(1) Stahlnaben-Durchmesser

(2) Diametro foro guida tolleranza H 11

(2) H 11 tolerance pilot bore

(2) Diamètre trou de guidage tolérance H11

(2) Führungsloch-Durchmesser mit Toleranz H 11

(3) Diametro fori alesati H 7 completi sede chiavetta UNI

(3) H 7 tolerance on finished bores complete with keyway to UNI standard

(3) Diamètre trous alésés tolérance H7 - avec logement clavette UNI

(3) Durchmesser der ausgebohrten Löcher H 7 komplett mit Keilstück-Aufnahme gemäß UNI-Norm